



## **FPi 4800**

Efficient, versatile, convenient.



FOLD AND INSERT

Inserting system

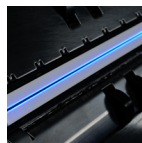
## FPI 4800

# High performance and maximum ease of use

The **FPI 4800** is the ideal inserting system for medium mail volumes of up to 40,000 letters per month. Fast, reliable and quiet, it can take business correspondence, single- or multi-part mailings, invoices, account statements and pay slips and turn them into letters. Its new inserting system is not only smart but also easy to use – plus its ultra-compact size means it saves space.

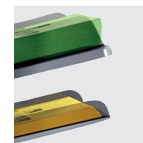
### High-capacity output stacker

Can accommodate up to 500 fully sealed envelopes.



### Flexibility on placement of your codes – wide-ranging read functions

The (optional) CIS scanner can read control codes of all kinds across the entire width of a sheet without any need for calibration.



### HC station

With an input capacity of up to 725 sheets, the HC station cuts the time taken for refilling and optimises the whole process.

### On-board operating instructions

Thanks to the 7-inch colour touch-screen display and new, intuitive menu, you'll be in tune with the system in no time.

### Viewing window for insertion area

Enables the inserting process to be observed at any time, thus allowing for adjustments to be made more easily.

### MaxiFeeder (optional)

Optional return envelope or enclosures – A5 (156 mm max.) or A4 (356 mm max.).

### Energy-saving

The machine will switch to standby/energy-saving mode automatically.



### 3 output options

The **FPI 4800** is available with either

- 01 Standard output stacker
- 02 Side-mounted envelope output
- 03 Vertical high-capacity output stacker

01



02



03



### ► Feed, fold, insert, seal

Turn documents into letters to fit C6, C6/5 or C5 formats in no time – whichever you like.

### ► Enclosures? Flyers? No problem!

You can attach response cards, flyers or return envelopes to your mailings, or use the fold function to create your own flyers.

### ► Fast, quiet and powerful

The **FPI 4800** can insert as many as 3,800 letters per hour. Its compact dimensions and quiet running make it a good fit for any office.

### ► Two base models

The **FPI 4820** base model offers two feed stations, with the upper station designed for high capacity (HC) to process higher volumes. The **FPI 4830** base model offers three stations. Both models are optionally available with a special lower feed station. This allows special paper types, such as high-gloss paper and paper measuring up to 1 mm thick, to be processed.

### ► Smart and convenient: Automatic Job

Thanks to the Automatic Job function, the system can detect which stations are loaded and automatically start the job with the correct fold settings.

### ► Real double-sheet control

Secure and reliable thanks to actual physical measurement of the paper thickness.

### ► Powerful folding: ten in one

This is how powerful the **FPI 4800** is: it can fold up to ten sheets at once (single fold) or eight sheets in a zig-zag or letter fold.

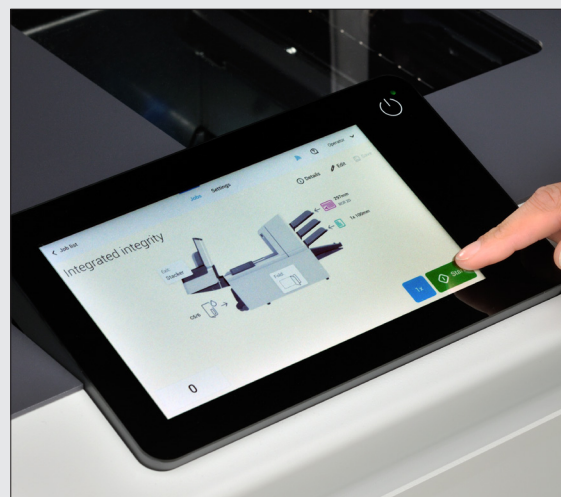
### ► Secure envelope removal

Optimised envelope feed with size specifications for envelope type selection and a lock for secure envelope removal.

#### Fold types:



Single, zig-zag, double parallel and letter folds.



### 7-inch colour touchscreen display

Simply load the **FPI 4800** and use the display to start a new job. The intuitive user prompts will make inserting your letters easy.

### Interface board

4 USB ports for future applications (hand-held scanner, address printer etc.)



### Daily mail function

Document sets of up to 10 sheets (loose or stapled) can be fed in manually. A stack of enclosures can also be fed in automatically.



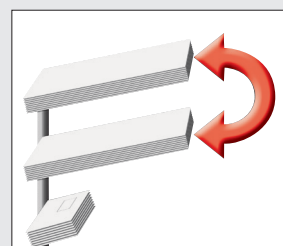
### Collection station

All sheets are gathered together and then folded at the same time. This significantly reduces the risk of a paper jam and gives you professionally processed correspondence.



### Feeder swap

Fill capacity can be increased if multiple stations are in use. Filling the stations alternately guarantees virtually non-stop processing.



# FPi 4800

## Technical data




Job memory	50
Read capabilities: OMR, BCR 1D & 2D, customer-specific programming, code library (25 max.)	Optional
Feed station capacity	
Automatic station (80 g/m <sup>2</sup> )	325
HC automatic station for increased volume (80 g/m <sup>2</sup> )	725
Special station, adjustable for critical material (80 g/m <sup>2</sup> )	325
Optional MaxiFeeder (varies by licence)	325 return envelopes or up to 1,200 documents
- A5 (156 mm max.)	
- A4 (356 mm max.)	
Envelopes (C6, C6/5, C5)	325
Vertical high-capacity output stacker	
Max. height (mm)	300
- With C5/6 + 1 × A4, 80 g/m <sup>2</sup> (zig-zag fold)	Up to 400 envelopes
- With C5 + 1 × A4, 80 g/m <sup>2</sup> (single fold)	Up to 500 envelopes
Folding capacity	
Single fold (A4, 80 g/m <sup>2</sup> )	Up to 10 sheets
Letter/zig-zag fold (A4, 80 g/m <sup>2</sup> )	Up to 8 sheets
Set thickness	Up to 2.5 mm
Documents	
Height	90–356 mm
Width	130–236 mm
Grammage/quality	60–250 g/m <sup>2</sup>
Sheet thickness (via special station)	Up to 1 mm
Dimensions (examples)	
Configuration: 3 stations + collection tray	
- Length × height × depth (mm)	1,360 × 720 × 500
- Weight (kg)	79
Configuration: 3 stations + vertical output stacker	
- Length × height × depth (mm)	1,360 × 770 × 500
- Weight (kg)	90
Noise emissions	
Operated alone	66 dB(A)
Operated with vertical stacker	67 dB(A)
Test certificate according to EU declaration of conformity	Yes

Subject to technical modifications.


©2024 Francotyp-Postalia. All rights reserved. The FP logo and Francotyp-Postalia product logos are trademarks or registered trademarks of Francotyp-Postalia GmbH.

## Model variants/ stations




**FPi 4820**

- 1 HC station
- 1 automatic station




**FPi 4820S**

- 1 HC station
- 1 special station



**FPi 4830**

- 3 automatic stations



**FPi 4830S**

- 2 automatic stations
- 1 special station



Francotyp-Postalia Ltd.  
74 Questor, Powdermill Lane  
Dartford, Kent DA1 1EF  
01322 424890  
[www.fpmailing.co.uk](http://www.fpmailing.co.uk)

