



AstroJet AJ-180 Quick Start Guide



Step 1

Unpack Printer and Accessories

Place Printer on a stable surface. Save packaging material.

Step 2

Connect Power to Printer

1. Check that the Printer is set for the power to be used (115V or 220V) [A].
2. Connect one end of the power cord to the rear receptacle on the Printer.
3. Plug other end into a 115-220 Volt AC (depending on Printer voltage), 50/60 Hz. grounded outlet.



DO NOT TURN POWER SWITCH ON YET

Connect Printer to Computer

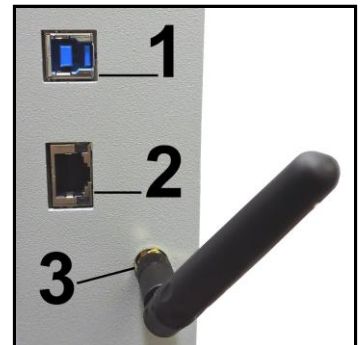
USB 3.1 Port: Plug USB cable into connector [1]. Cable used to connect Printer to computer must not exceed 6 feet long.

Ethernet (Network) Port: Plug network Ethernet cable into connector [2].

Wi-Fi Port: Connect Wi-Fi antenna (included) to this port [3] for wireless Printer monitoring or operation through your network.

DO NOT CONNECT USB CABLE OR NETWORK CABLE YET.

DO NOT TURN PRINTER POWER SWITCH [1] ON YET.

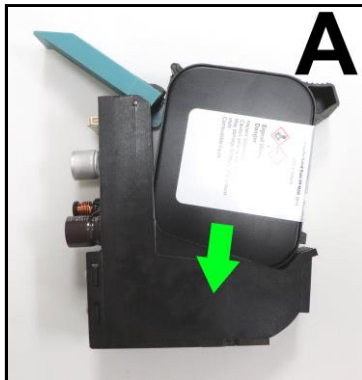


Step 3

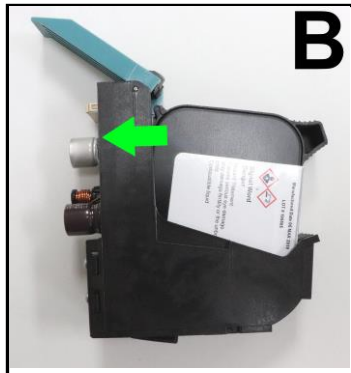
Install Inkjet Cartridges

The **AJ-180** holds 8 Inkjet Cartridges.

1. Remove inkjet cartridge from packaging. **DO NOT** touch copper contacts, metal plate, or gold printhead. Remove protective tape from Printhead.



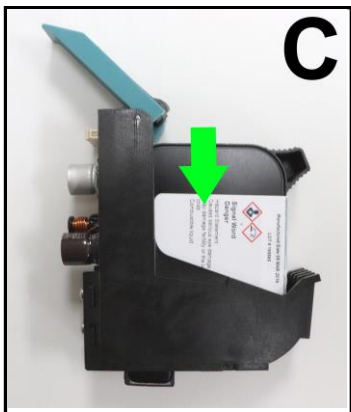
2. **[A]** With Cartridge's Printhead pointing down and while keeping the Cartridge lightly in contact with the edge of the Latch Lever: Slide the Cartridge into Holder at as vertical an angle as possible.



[B] Push straight back toward contacts in the

Printhead Holder. **NOTE: Be careful not to bend the contact pins in the Holder or to damage the surface of the Cartridge.**

[C] Make sure Cartridge is seated in Holder.



3. Close Latch Lever to secure Cartridge in Holder.

DO NOT force Lever into place.

4. Repeat **Steps 1-3** for remaining Inkjet Cartridges.

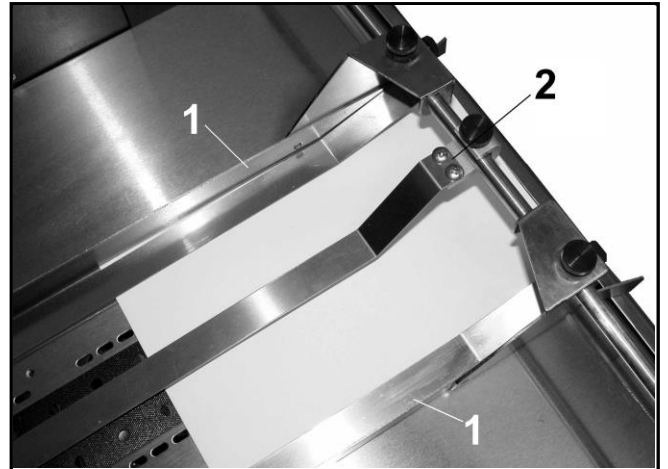


Ink in Cartridge may be harmful if swallowed. Keep new and used Cartridges out of reach of children. Discard empty Cartridges immediately.

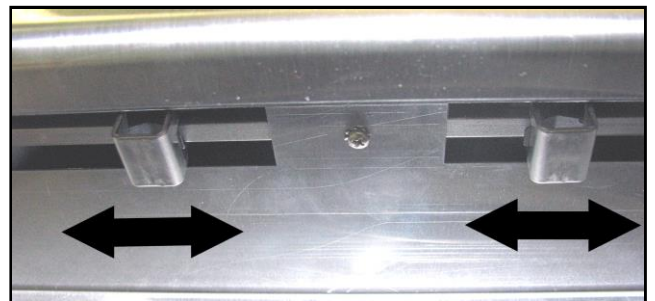
Step 4

Adjust Printer to Media

Place one piece of media on center of conveyor portion of Feeder. Adjust Side Guides **[1]** to media. Use Media Retainer Assembly **[2]** to help hold media down.



NOTE: Two narrow Belts can be moved by turning Printer ON and sliding Belt Guide Adjusters (located under Conveyor Table) in the appropriate direction until they are under the media.



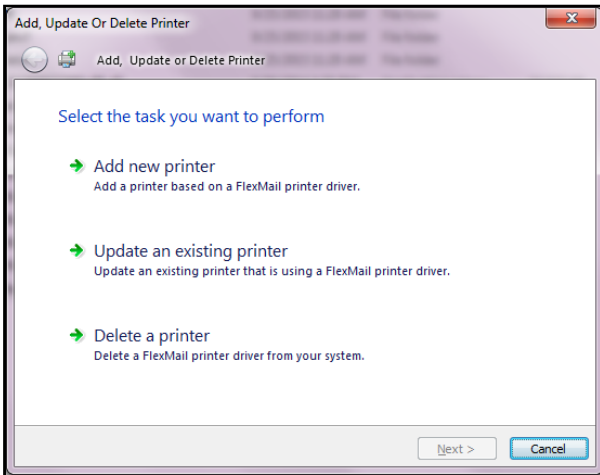
Step 5

Install Print Driver

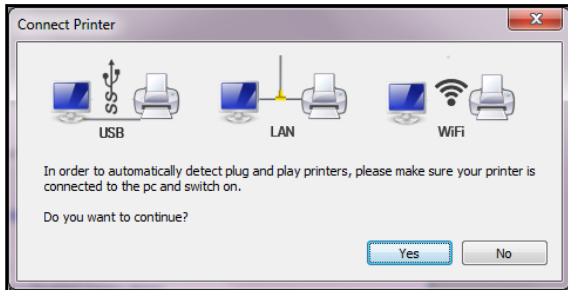
Download the latest Printer Driver from the Printer manufacturer's website. Make sure the USB or Network cables are connected to the Printer and your computer and that the Printer is switched on.

- If your Network requires a static IP address, see “**Network Settings**” in the **Operator Manual**.
- If you wish to use WiFi, see “**WiFi Setup**” in the **Operator Manual**.

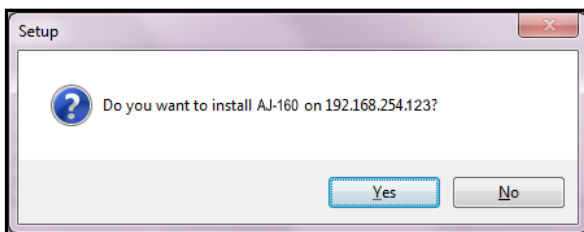
1. **Open the downloaded Printer Driver Folder:** Select and double-click “**Setup.exe**”.
2. “**Add, Update or Delete Printer**” window opens. Click “**Add New Printer**”. Click **Next>**.



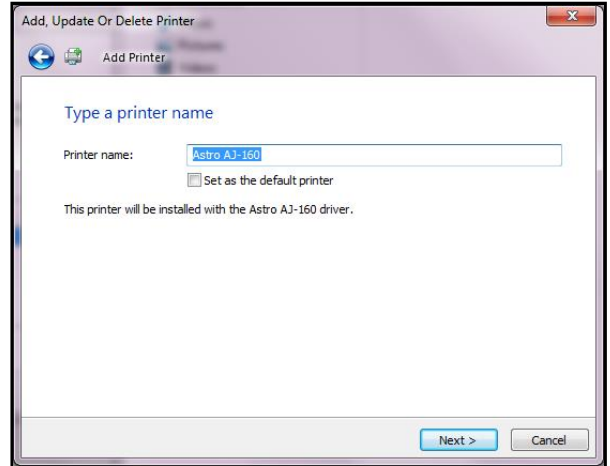
3. The “**Connect Printer**” window opens. Make sure the Printer is plugged in and switched on and that it is connected by USB, Network or WiFi to your computer. Click “**Yes**”



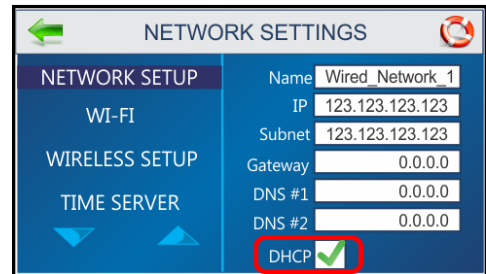
4. The “**Want to Install Printer...**” window opens. If that is correct. Click “**Yes**”.



5. The Driver will load and the next screen allows you to “**Name Your Printer**”. Unless another printer has the same name on your system or network, ignore this step and click **Next>**.



6. Click **Finish** to complete the installation.
7. In “**Devices and Printers**” check that Printer is available and active.
8. **Using the Printer Touchscreen:** Press the **Network** icon on the **Tools** screen to open the **Network Settings** screen. Select **Network Setup** to enter the settings for connecting the Printer to your network. **Uncheck the DHCP** box. This will ensure that the Printer's IP address won't change each time the Printer is powered down.



Step 6

To install Accessories and for Printer set-up or operation, please refer to “**AstroJet AJ-180 Printer Operator Manual**” supplied with Printer.



**ASTRO
MACHINE
CORP.**

630 Lively Blvd.
Elk Grove Village, IL 60007
Phone: (847) 364-6363
Fax: (847) 364 9898
www.astromachine.com