



Parcel Shipping Label Printer

# USER GUIDE



# CONTENTS

---

Product Introduction.....	1
Quick Printer Installation.....	2
Label Setup.....	3
Driver Installation.....	4
Windows Driver Installation.....	4
Mac Driver Installation.....	10
FEED Button Instruction.....	12
LED Status.....	12
FAQs.....	13
Specifications.....	15
Support.....	15

# PRODUCT INTRODUCTION

---

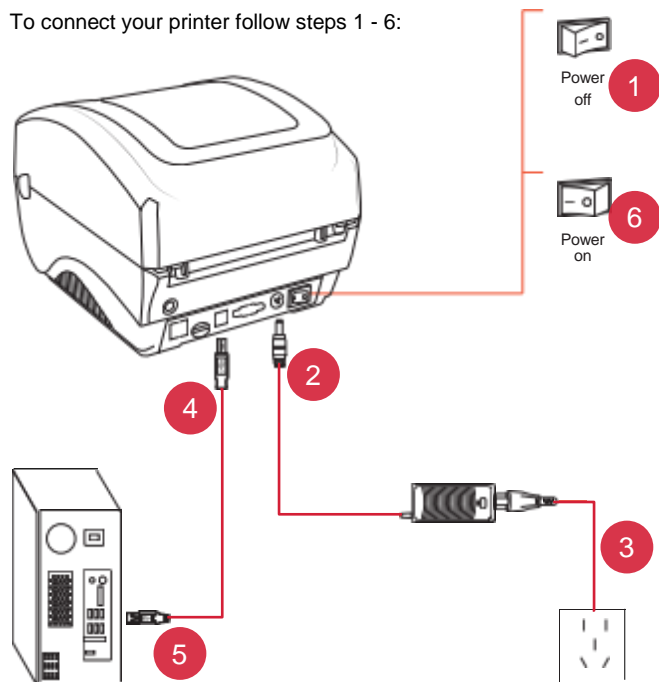
What's in the box?



- |            |                  |               |
|------------|------------------|---------------|
| 1. Printer | 2. Power cable   | 3. USB cable  |
| 4. Labels  | 5. Power adapter | 6. User guide |

## QUICK PRINTER INSTALLATION

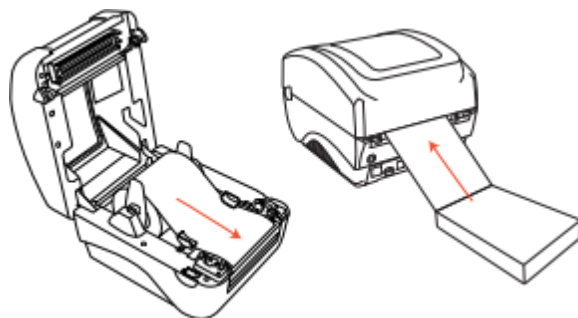
To connect your printer follow steps 1 - 6:



*Note: Please use the original power adapter provided by FP.*

## LABEL SETUP

- 1 Facing the front of the printer, press the cover open button to open the top cover.
- 2 Load the label paper with the holders on both sides.
- 3 Finish the loading the labels, then close the cover.
- 4 After loading labels, perform a label size calibration.



*Note: Before using the printer to print labels, please calibrate the paper size.*

**Label size calibration:**

- 1 Turn on the printer
- 2 Press and hold the FEED button
- 3 Release the button when you hear one beep
- 4 The printer will then calibrate the label size

# DRIVER INSTALLATION

[www.FP-USA.com](http://www.FP-USA.com) located under **Help Center > Digital solutions > MailOne**

OR download directly inside Parcel Shipping application

**My Parcel Shipping > Administration > Device Management**

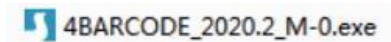
## Warning:

Printer head (TPH) will be very hot after printing.  
Please don't touch the printer head or parts around it.

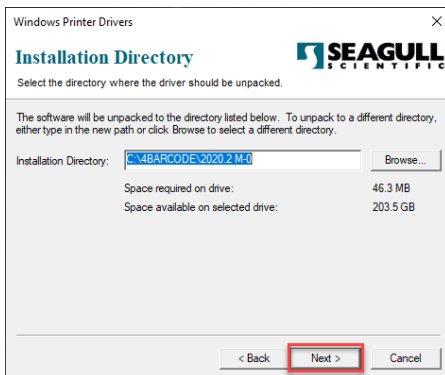
# WINDOWS DRIVER INSTALLATION

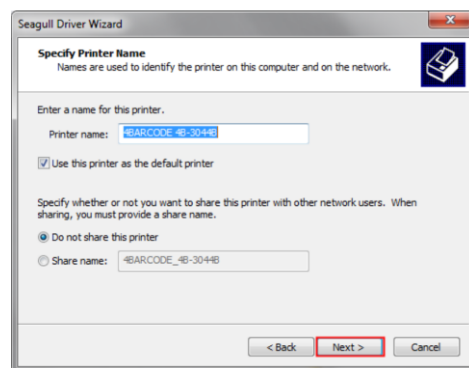
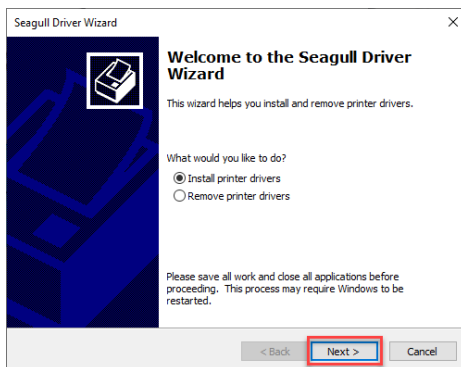
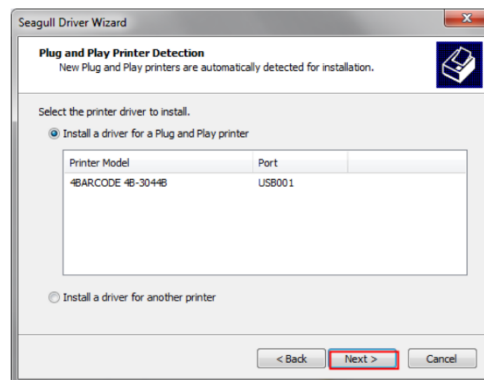
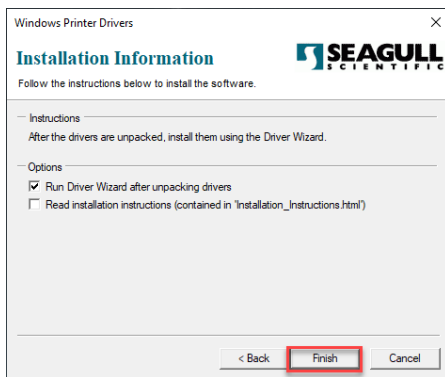
**Note:** Please connect to USB cable to the computer first and then turn on the printer.

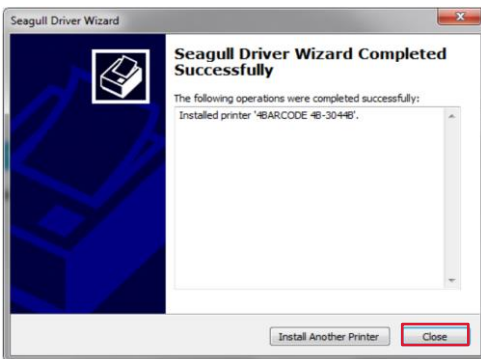
- 1 Open the driver file you downloaded.



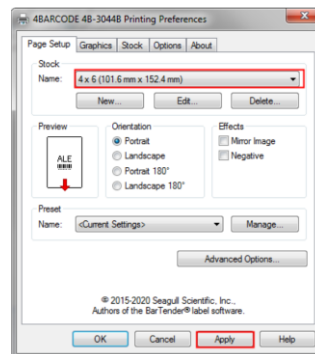
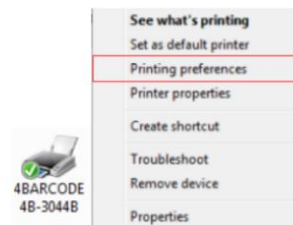
- 2 Follow the on-screen driver installation instructions:







- 3 Check the printer Page Setup in **Printing preferences** (4" x 6" / 101.6mm x 152.4mm)



*Note: If the USB interface cannot be recognized during the installation process, please restart the printer.*

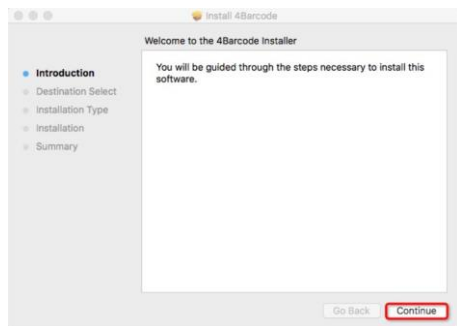
# MAC DRIVER INSTALLATION

**Note:** Please connect the USB cable to the computer first and then turn on the printer.

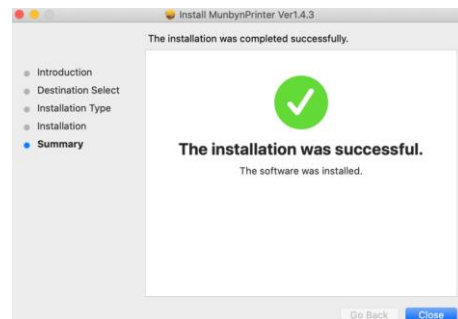
- 1 Open the driver software you downloaded.



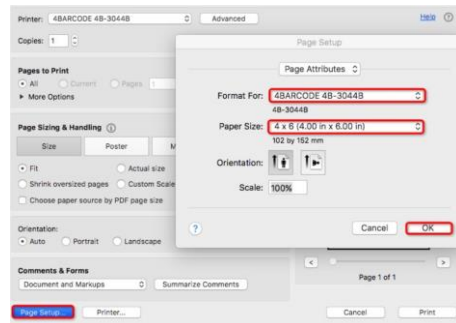
- 2 Start installation.



- 3 Follow the guideline to install until "The installation was successful" appears.



- 4 Page Setup, choose 4x6" (102x152 mm), then we can open the document and select the printer to print shipping labels.



## FEED BUTTON INSTRUCTION

Printer status	Operation of FEED	Function
Standby	Short press the button(light)	Feed blank labels
Standby	Long press the button(light) until beep once	Automatically calibrate paper size
Standby	Long press the button(light) until beep twice	Print a test page
Standby	Long press the button(light) until beep five times	Reset printer

## LED STATUS

Description	LED indicator
Power on, waiting for printing instructions	Blue light
The printer is downloading data or paused	Blue light flashing
The printer is clearing data	Purple light
The cover is open	Red light
Printing errors, such as: out of paper, paper jam, or memory error, etc.	Red light flashing

## FAQs

**Q1: When the printing is too faint, how do I adjust the density and printing speed?**

**A1:** For Windows: Printer Preferences → Options → Setting;  
For Mac OS: Can be set in drop-down menu under 'Printer Features'

**Q2: How do I clear paper jams and/or eliminate white spots in my printing?**

**A2:** Turn off the printer, and allow the printer head to cool down. Use an alcohol to wipe the printer head clean.

**Q3: Why does it print extra blank labels after the one successful print?**

**A3:** Please check if the paper size setting of the printer is correct, and adjust the scale and margins in preview page or page setup when you are printing from browser.

**Q4: Why I am printing blank labels?**

**A4:** Make sure your labels are 'Direct Thermal' labels and the label that you peel off should be facing up when it comes out of the printer. If it still does not work, reinstall the driver.

**Q5: How do I print a test label?**

**A5:** A test label can be used to determine whether the machine is malfunctioning and whether the printing performance is good. You can print a test label as follows.

1. Turn on the printer.
2. Press and hold the FEED button.
3. Release the button when you hear two beeps.



## SPECIFICATIONS

---

Model	PSL300U
Method	Direct Thermal
Resolution	300 DPI
Max Printing Speed	106mm/s
Paper Width	104mm
Paper Thickness	0.06-0.25mm
Power Adapter	24V/2.5A
Printing Life	TPH 30 Km
Connection	USB

## SUPPORT

---

For Technical Support, contact FP:

**USA:** [www.fp-usa.com](http://www.fp-usa.com)

**UK:** [www.fpmailing.co.uk](http://www.fpmailing.co.uk)