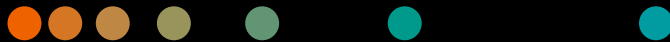


UpTeam Services

teamplay Fleet Connect

Streamline your fleet management.
Optimize your asset performance.



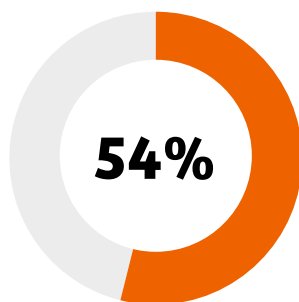
With ongoing consolidations, you as a healthcare provider face the challenge of managing a continuously growing fleet of medical devices. In order to be able to assess your equipment performance and make confident decisions holistically, you need to have access to real-time data in one place to decide on the required actions. However, in many cases the data you need for this is not easily or quickly available, either scattered across different data sources or simply outdated, which requires a lot of time and manual effort from you to get the transparency and data quality you need.

teamplay Fleet Connect¹ is a teamwork Fleet Enterprise solution that enables you to streamline the management of your fleet from Siemens Healthineers. teamwork Fleet Connect allows you to optimize your asset performance through confident, data-driven decisions in your service management software solution by connecting and sharing equipment and service data with selected healthcare service management software solutions.

teamplay Fleet Connect allows you to:

- **Increase your data transparency and save time** by having up-to-date equipment and service-related information from across your institutions digitally available in your service management system
- **Improve your data quality and reliability** by connecting service processes to empower faster and more confident data-driven decision-making
- **Enhance your operational efficiency** by avoiding non-value adding, manual data maintenance activities through automated data synchronization

teamplay Fleet Enterprise is a suite of subscription-based solutions that allows you to extend your capabilities when working with teamwork Fleet.



of healthcare organizations report difficulty accessing and integrating multiple data sources²

Learn more about teamwork Fleet Connect



[siemens-healthineers.com/
teamplay-fleet-connect](https://www.siemens-healthineers.com/teamplay-fleet-connect)

How teamplay Fleet Connect¹ works



teamplay Fleet is an online software solution that provides you with relevant equipment and service information from Siemens Healthineers.

teamplay Fleet Connect allows you to connect teamplay Fleet with your service management software solution.

Your service management solution can push and pull equipment and service information, configurable to the level of integration you need.

Which data can be sent and received with teamplay Fleet Connect?



Exchange of equipment information, e.g., pull a full list of your equipment from Siemens Healthineers, including details and a functionality to update equipment information.



Exchange of ticket information, e.g., access to open and closed tickets including a push functionality to raise new tickets directly via your service management software solution.

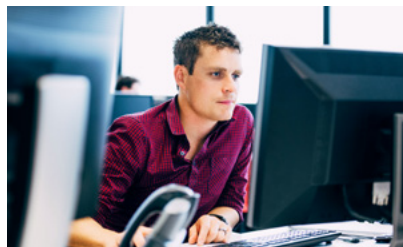


Secure connection Sophisticated user identification and data encryption based on OAuth 2.0 standards enable safe data transfer

Easy and flexible integration



Integration through commercially available solutions: Selected cooperation partners³ provide dedicated plugins and enable easy onboarding for their service software solutions.



Integration through self-developed solutions: For self-developed solutions we offer comprehensive training documentation and direct support during integration.

¹ Subscription required. Availability of subscription depends on country.

² HIMSS Media (2019): Democratizing data for healthcare success, https://community.useready.com/wp-content/uploads/2019/08/WP_HIMSS_Democratizing_Healthcare_Data.pdf, last accessed July 27, 2020

³ Please contact your local Siemens Healthineers organization for further details. If the services are not marketed in countries due to regulatory or other reasons, the service offering cannot be guaranteed.

Siemens Healthineers Headquarters

Siemens Healthcare GmbH
Henkestr. 127
91052 Erlangen, Germany
Phone: +49 9131 84-0
siemens-healthineers.com

The products/features and/or service offerings (here mentioned) are not commercially available in all countries and/or for all modalities. If the services are not marketed in countries due to regulatory or other reasons, the service offering cannot be guaranteed. Please contact your local Siemens Healthineers organization for further details.