

# How to Import the Scan Protocols?

Answers for life.

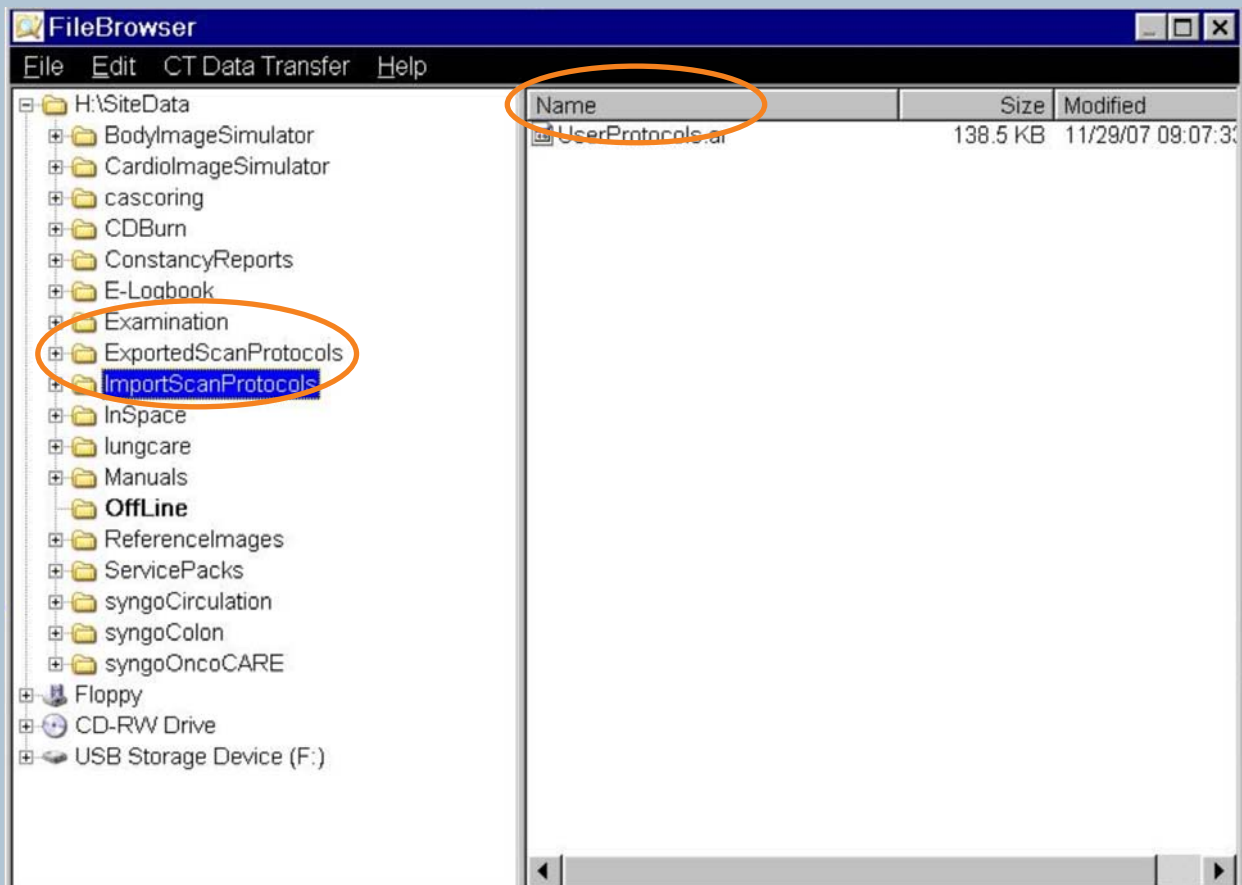
**SIEMENS**

# Import

## Preconditions:

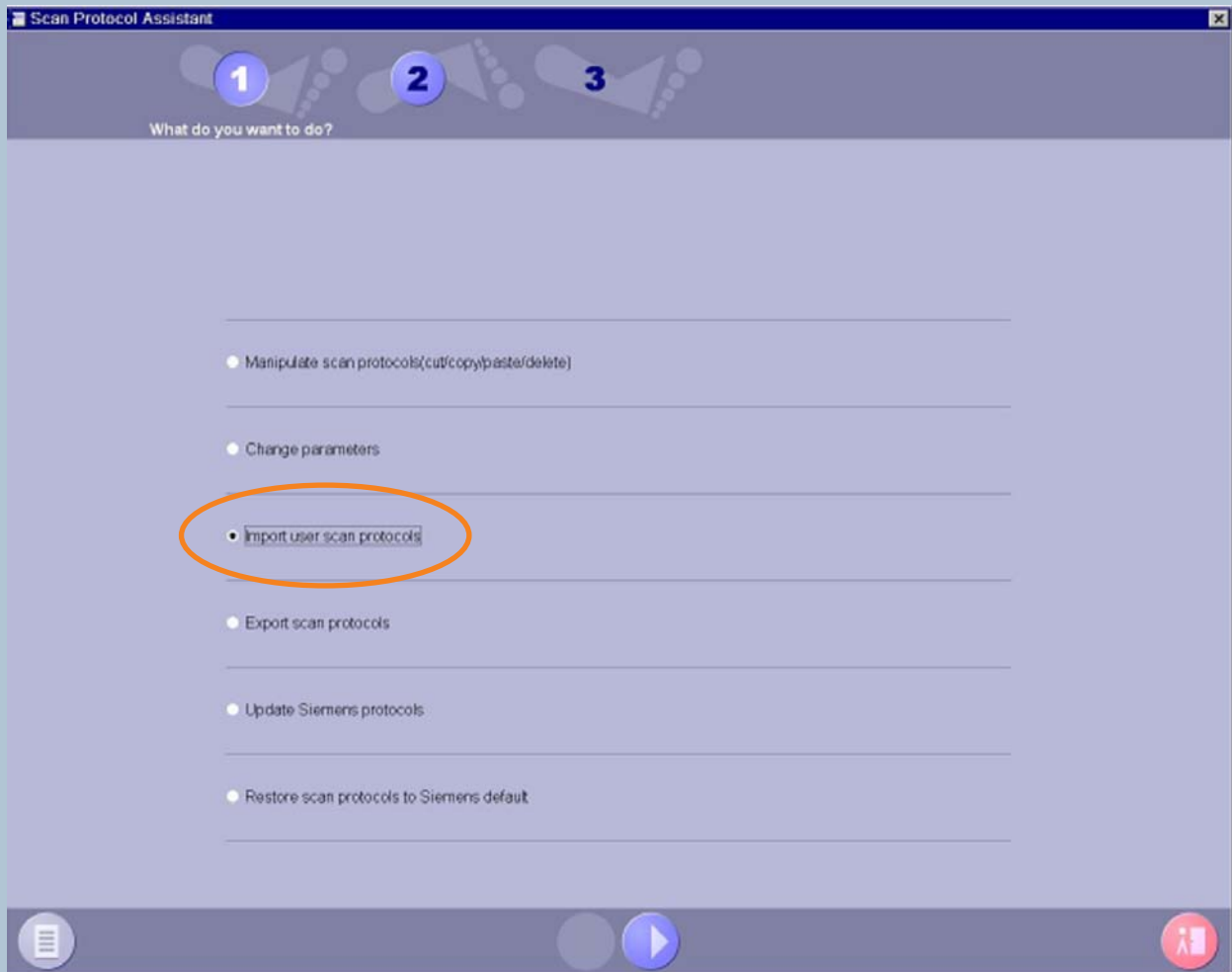
- the **same** scanner type
- the **same** licenses
- **upwards** compatible, e.g. from VA20 to VA30

1. Take the file UserProtocols.ar in the folder: ImportScanProtocols



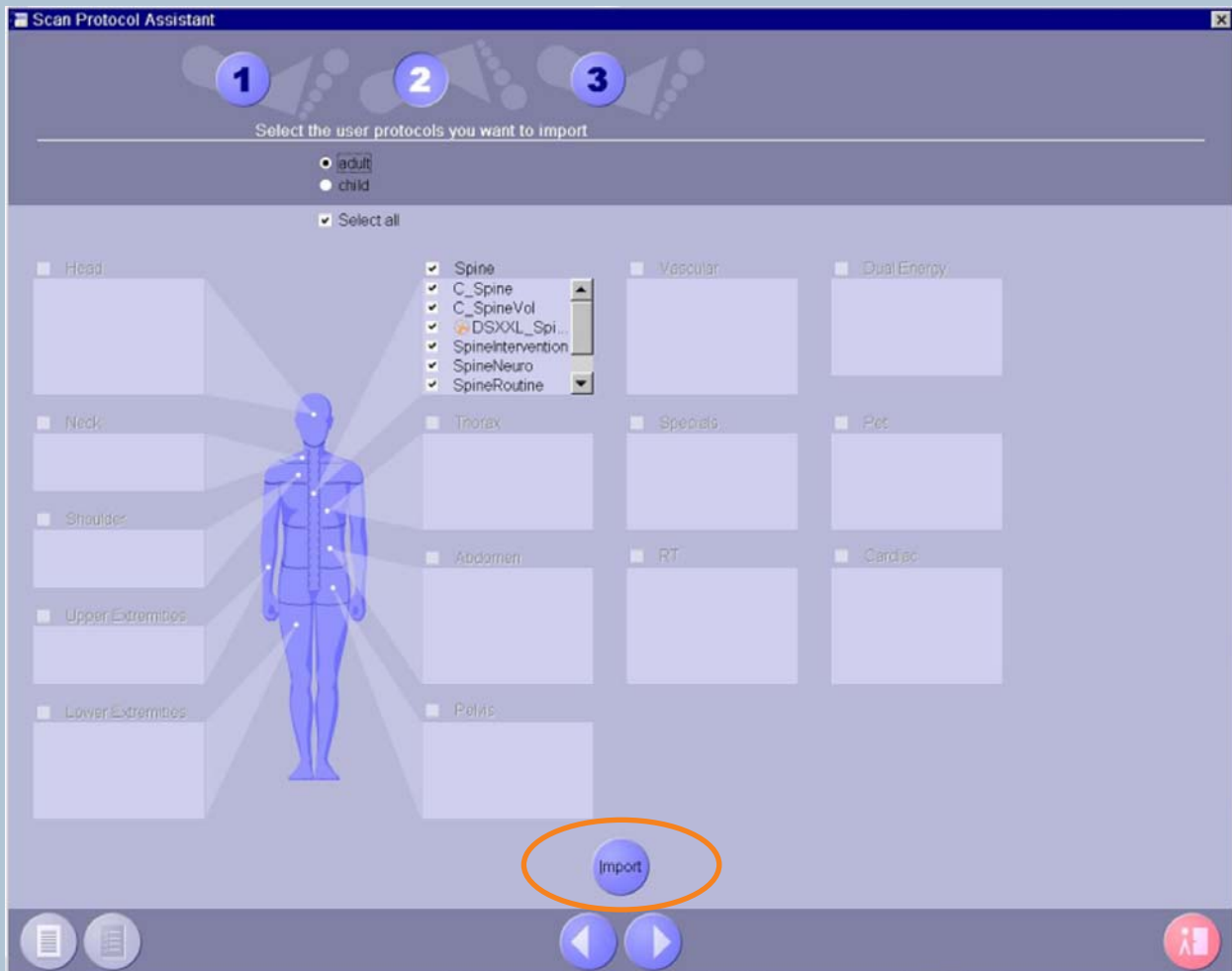
# Import

2. Open the Scan Protocol Assistant and select Import user scan protocols



# Import

3. Select the Scan Protocols and click on Import



**Global Business Unit**

Siemens AG  
Medical Solutions  
Computed Tomography  
Siemensstr. 1  
91301 Forchheim  
Germany  
Phone: +49 9191 18-0  
Fax: +49 9191 18 9998

**Global Siemens Headquarters**

Siemens AG  
Wittelsbacherplatz 2  
80333 Muenchen  
Germany

**Global Siemens  
Healthcare Headquarters**

Siemens AG  
Healthcare Sector  
Henkestr. 127  
91052 Erlangen  
Germany  
Phone: +49 9131 84-0  
[www.siemens.com/healthcare](http://www.siemens.com/healthcare)

**Legal Manufacturer**

Siemens AG  
Wittelsbacherplatz 2  
DE-80333 Muenchen  
Germany

[www.siemens.com/healthcare](http://www.siemens.com/healthcare)