

# *syngo* Fly Through

*syngo*® Fly Through offers new perspectives for enhanced diagnosis:

- Simulated views of e.g. the inside of bronchi, vessels, colon and any other hollow structures
- Multi-modality application for CT, MR and 3D-XA data
- Fully integrated into the familiar 3D workflow and user interface
- One click to action

## *syngo* Fly Through

New perspective for enhanced diagnosis – fast and easy for routine use

Answers for life.

**SIEMENS**

## High Quality and Real-Time Endoscopic View

Simulated display of internal anatomy without any invasion – even in areas where real endoscopic procedures may not be possible.

## Easy-to-Use Familiar Orientation

The 3D endoscopic view is constantly correlated with three MPR displays (Multi Planar Reformations) in the familiar *syngo* four-quadrant display. The correlated MPR positions are color-coded and projected back on the endoscopic view.

## Quick Endo View

One mouse click to switch on the corresponding endoscopic view at the point of interest defined in MPR display.

## Easy Navigation

Use the fully interactive visualization cones in the correlated MPR displays or the patented SmartSelect® controls directly in the endoscopic view.

## Multi-Modality Application

Create endoscopic views with, e.g. CTA, MRA or 3D-XA images.

## Automatic Navigation

A single mouse click to virtually fly forwards or backwards through a tubular structure along the automatically determined path.

## Wide Range of Interaction Modes

Such as fix-point rotation, zoom/pan, or push/pull/rotate.

## Free Definition of Presets

For endoscopic views. Presets can be linked to DICOM series description for automatic reuse on subsequent examinations.

## Path Creation

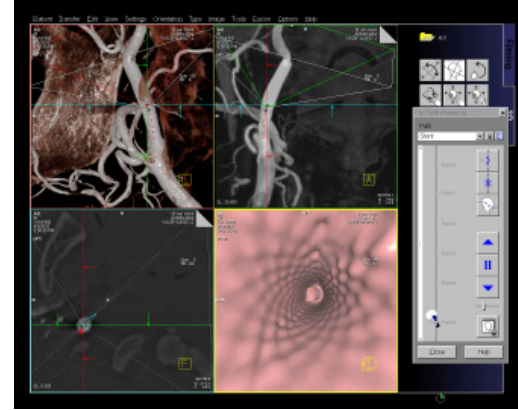
Insert key frames at various positions of 3D volume. Users can label key frames of interest with their comments, e.g. lesion position.

## Different Fly Modes

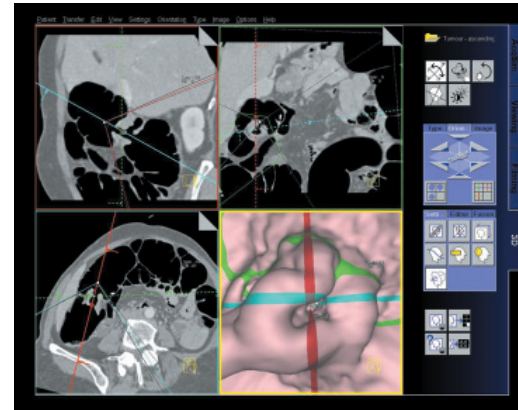
- Automatic forward/backward with adjustable velocity
- Jump between key frames
- Sliding control to adjust position along the path
- Choose view direction (forward/backward)

## Documentation

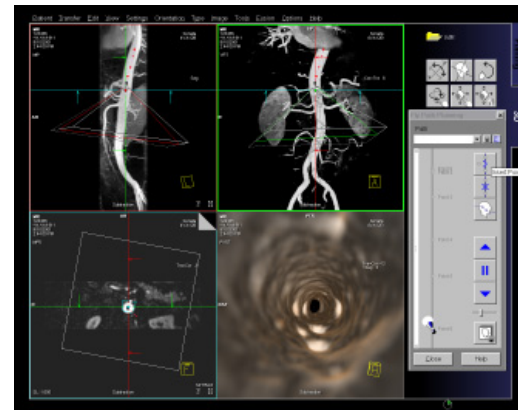
Results images can be copied on a film sheet, saved on CD or DVD, and exported to other DICOM nodes.



3D-XA: endoluminal visualization of a carotid stent



CT: tumor in the ascending colon with superimposed reference lines



MR: Fly Through the Aorta

### Global Siemens Headquarters

Siemens AG  
Wittelsbacherplatz 2  
80333 Muenchen  
Germany

### Global Siemens Healthcare Headquarters

Siemens AG  
Healthcare Sector  
Henkestr. 127  
91052 Erlangen  
Germany  
Phone: +49 9131 84-0  
[www.siemens.com/healthcare](http://www.siemens.com/healthcare)

### Legal Manufacturer

Siemens AG  
Wittelsbacherplatz 2  
DE-80333 Muenchen  
Germany