

# Cerebral Amyloid Angiopathy Associated with Granulomatous Angiitis

A Case Report from Mayo Clinic, Rochester, USA

[www.usa.siemens.com/medical](http://www.usa.siemens.com/medical)

**SIEMENS**  
medical

# Utility of Susceptibility-Weighted Imaging (SWI) in the Detection of Subcortical Hemorrhages in the Setting of Granulomatous Angiitis and Amyloid Angiopathy

John I. Lane, MD  
Associate Professor of Radiology,  
Mayo Clinic, Rochester, Minn.

## Clinical Presentation

A 70-year-old male presented with progressive cognitive decline to include difficulties with short term memory, reading, expressing himself, and doing arithmetic. Neurologic consultation recommended MR of the brain and psychometric testing. MR demonstrated localized vasogenic edema in the left parieto-occipital region without evidence of an underlying mass on the post-contrast T1 sequence (Figures 1 and 2). Diffusion imaging was negative. Susceptibility-weighted imaging demonstrated multiple subcortical deposits of hemosiderin throughout both cerebral hemispheres with localized concentration of these lesions in the area of edema. SWI showed better conspicuity and greater number of lesions than the corresponding gradient echo sequence (Figures 3 and 4). Review

of the spin-echo sequence suggested a diagnosis of an infiltrative primary glial neoplasm. The distribution of the hemosiderin deposits suggested a more diffuse microvascular process such as amyloid angiopathy with localized edema raising the possibility of granulomatous angiitis creating the appearance of a cerebral "mass."

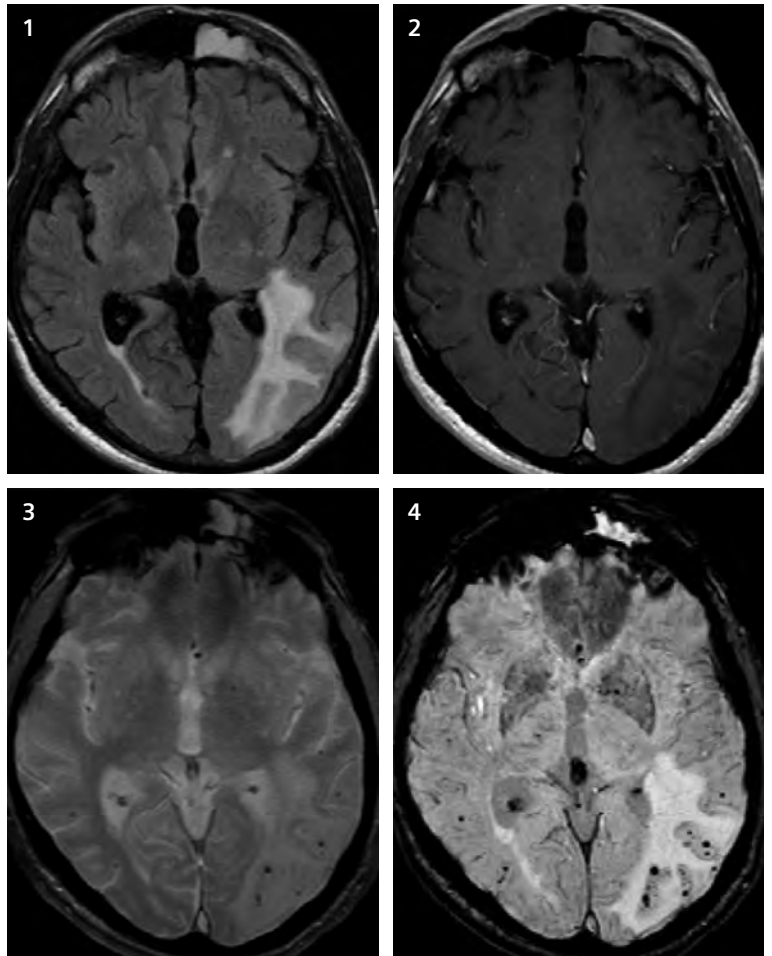
The patient underwent craniotomy and biopsy of the left parietal region to exclude underlying neoplasm. Pathology revealed amyloid-beta-related angiitis (ABRA).

## Discussion

Patients with cerebral amyloid angiopathy associated with granulomatous angiitis usually present with progressive intracranial hypertension or dementia.

Imaging studies usually demonstrate focal or multifocal non-enhancing lesions or diffuse leukoencephalopathy.<sup>2</sup>

The term cerebral amyloid angiopathy (CAA) describes the localized deposition of amyloid in blood vessels within the cerebrum and overlying leptomeninges. CAA encompasses a heterogeneous group of hereditary and sporadic diseases, much the most common of which is sporadic CAA due to the vascular deposition of amyloid b peptide (Ab). Ab vascular deposition affects about 30% of the otherwise normal elderly and over 90% of those with Alzheimer's disease, in whom CAA tends also to be more severe. The most frequent clinical manifestation is lobar cerebral hemorrhage, which may be multifocal and recurrent, but CAA can also cause cerebral infarction and ischaemic leukoencephalopathy.



Imaging findings are characterized by diffuse white matter lesions, focal edema, mass effect, hemorrhage, infarcts and atrophy.

Detection of the hemosiderin deposits in this patient was critical to suggesting the diagnosis of granulomatous angiitis. Susceptibility-weighted imaging was superior to gradient echo imaging in detecting hemosiderin deposition.

**SWI was critical to the appropriate interpretation of the MR exam.**

#### References

1. Wong SH, Robbins PD, Knuckey NW, Kermode AG, Cerebral Amyloid Angiopathy presenting with vasculitic pathology, *J Clin Neurosci*. 2006 FEB;13(2):291-4. EPUB 2006 JAN 24.
2. Le Coz P, Mikol J, Ferrand J, Woimant F, Masters C, Beyreuther K, Haguenaum, Cophignon J, Pepin B. Granulomatous Angiitis and Cerebral Amyloid Angiopathy Presenting as a Mass Lesion. *Neuropathol Appl Neurobiol*. 1991 Apr;17(2):149-55.
3. Pascale Schwab, Hart G. W. Lidov, Richard B. Schwartz, Ronald J. Anderson, TI: Cerebral amyloid angiopathy associated with primary angiitis of the central nervous system: Report of 2 cases and review of the literature. *Arthritis Care & Research* 2003; 49:: 421-427.

*Figure 1: Flair sequence demonstrates localized pattern of vasogenic edema in the posterior temporal-occipital region of the left cerebral hemisphere.*

*Figure 2: T1 image with contrast demonstrates no evidence of an enhancing mass associated with the vasogenic edema.*

*Figure 3: Gradient echo image demonstrates punctate deposits of hemosiderin in the left parieto-occipital region.*

*Figure 4: Susceptibility-weighted image demonstrates increased conspicuity of the hemosiderin deposits throughout both cerebral hemispheres consistent with amyloid angiopathy. This finding, in conjunction with the focal edema, led to the suggestion of concomitant granulomatous angiitis.*

*All images from MAGNETOM Avanto system.*

On account of certain regional limitations of sales rights and service availability, we cannot guarantee that all products included in this brochure are available through the Siemens sales organization worldwide. Availability and packaging may vary by country and is subject to change without prior notice. Some/all of the features and products described herein may not be available in the United States.

The information in this document contains general technical descriptions of specifications and options as well as standard and optional features which do not always have to be present in individual cases.

Siemens reserves the right to modify the design, packaging, specifications and options described herein without prior notice. Please contact your local Siemens sales representative for the most current information.

Note: Any technical data contained in this document may vary within defined tolerances. Original images always lose a certain amount of detail when reproduced.

© 4.2007, Siemens Medical Solutions USA, Inc.  
Order No. A9119-7866-X1-4A00  
Printed in USA

**Contact Address Germany**

Siemens AG, Medical Solutions  
Henkestr. 127, D-91052 Erlangen  
Germany  
Telephone: +49 9131 84-0  
[www.siemens.com/medical](http://www.siemens.com/medical)

**Contact Address USA**

Siemens Medical Solutions USA  
Magnetic Resonance Division  
51 Valley Stream Parkway  
Malvern, PA 19355-1406  
USA  
Telephone: 1-888-826-9702

**Headquarters**

Siemens Medical Solutions USA  
51 Valley Stream Parkway  
Malvern, PA 19355-1406  
USA  
Telephone: 1-888-826-9702