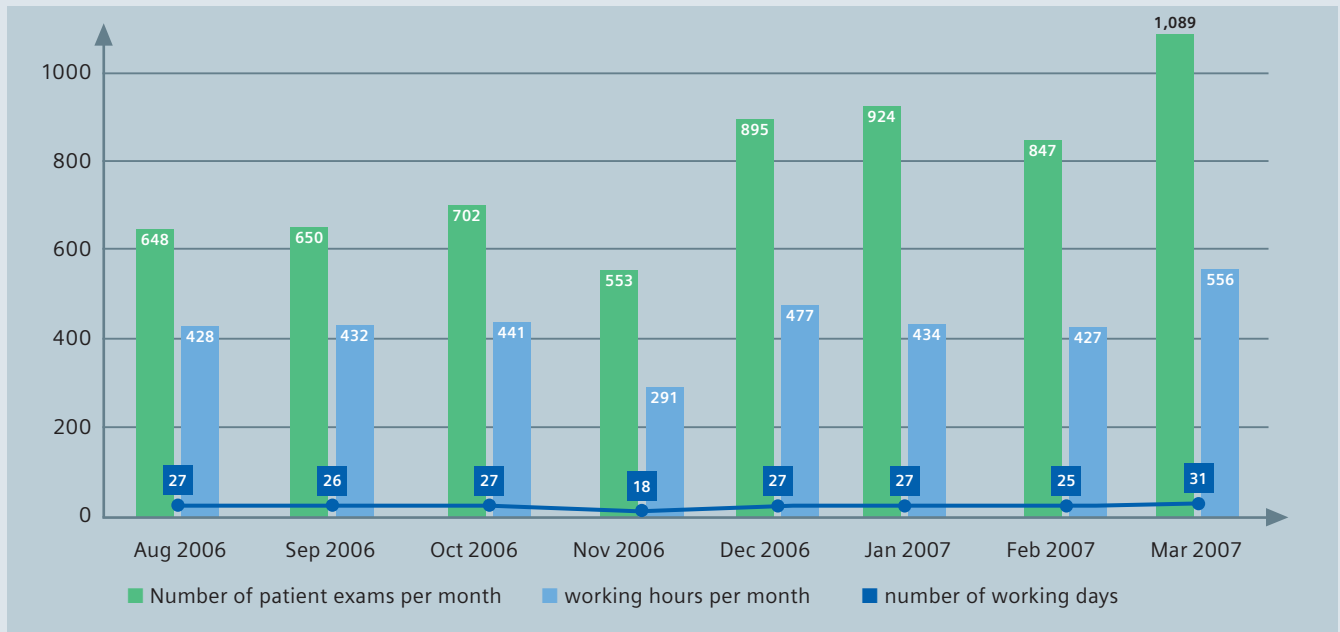


More throughput in the same time

Data acquired with Siemens' Utilization Management tool was used to determine the change in productivity after a Tim upgrade. The upgrade was done at X-Leme Clinic in Brazil (Dr. Heraldo Mello Neto) in November 2006, where a MAGNETOM Symphony with Quantum gradient system had been used since 2001 to offer a complete range of MR

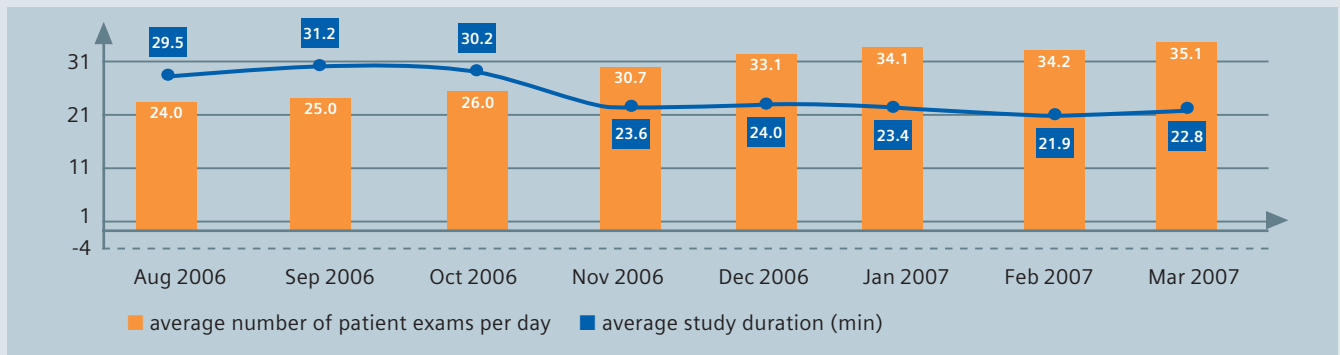
examinations. With the MAGNETOM Symphony, A Tim System, productivity increased on average by nearly 40% (comparing the two months prior to the upgrade with the four months following it). Less scan time, more patients, and a fast return on investment. More patients per month in the same number of working hours.



Faster scan times mean more patients per day

The productivity improvement can also be seen in the figure below. Due to faster scan times, study durations are significantly shorter and the number of patients per day increased in practically the same number of working hours: For example, between September 2006 and January 2007, the average study duration decreased by nearly 8 minutes (-25%)

with the same or even better image quality, thus the average number of patients per day increased significantly (from 25 in September to 34.1 in January 2007). The majority of this improvement was due to faster average scan time per patient.

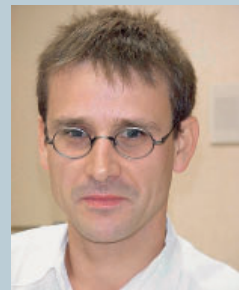




Dr. Heraldo Mello Neto
X-Leme Clinic, Brazil

“...after the Tim Upgrade we reduced scan times from 30 minutes to 20 minutes ...”

“Although Tim stands for Total imaging matrix, after experiencing the MAGNETOM Symphony with Tim myself I have decided that Tim stands for Total improvement.”



Dr. Johan Dehem
VZW Jan Yperman,
Belgium