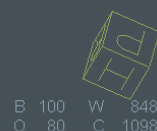


Artis zee - Study Protocol

Complex Pulmonary Anatomy



Congenital Heart Disease

Supported by

- *syngo* DynaCT Cardiac
- *syngo* iPilot
- *syngo* InSpace3D

Courtesy of

Martin Glöckler, MD,
Department of
Pediatric Cardiology
University Erlangen,
Germany

System & Software

Artis zee with 20 x 20 FD
syngo X Workplace

Case Description

Patient History

The patient was a 4-month-old female weighing 6 kg, with a length of 59 cm.

Diagnosis

Double outlet right ventricle (DORV),
Fallot type.

Treatment

- Balloon dilation with 5 mm Osypka balloon in left pulmonary artery (LPA).
- Coiling of collaterals from the right mammary artery with three detachable Cook coils.

Tips and Tricks

syngo iPilot was used to superimpose the 3D visualization onto the live fluoroscopy images for increased confidence during the procedure.

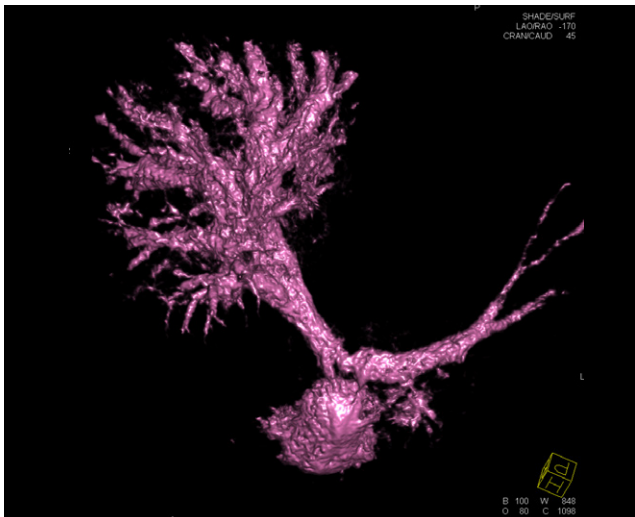
In addition, 3D imaging was helpful in positioning the X-ray tubes at the appropriate angle.

“The 3D picture extended the interventionalist’s view with a better understanding of the anatomy, and expedited the intervention significantly.”

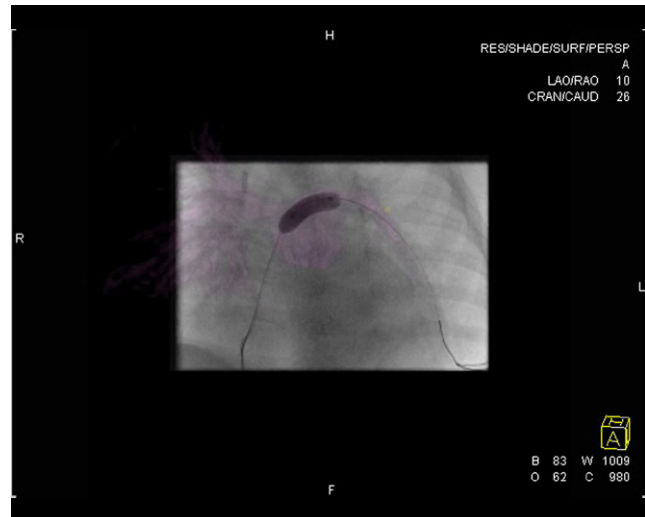
Complex Pulmonary Anatomy

Acquisition Protocol	
5s DR Card Care	
Number of Projections:	133
System Dose:	0.10 μ Gy/f
Increment in Degrees:	1.5 °/f
Injection Protocol	
Catheter Position:	Central Pulmonary Artery
Contrast Medium (CM):	350 mg Iodine/ml
Test Bolus:	w/o
Dilution:	40 %
Injection Volume:	24 ml (10 ml CM/ 14 ml Saline)
Injection Rate:	4 ml/s
Duration of Injection:	6 s
X-ray Delay:	1 (1;1.5) s
Power Injector Used:	Yes

Reconstruction	
VOI Size:	Full
Slice Matrix:	512 x 512
Kernel Type:	HU
Image Characteristics:	Normal
Reconstruction Mode:	Nat Fill
Viewing Preset:	Golden
Secondary Recon	
	No



syngo InSpace reconstruction after “interactive punching”



syngo iPilot Overlay for guidance during the procedure

The statements by Siemens’ customers presented here are based on results that were achieved in the customer’s unique setting. Since there is no “typical” hospital and many variables exist (e.g., hospital size, case mix, level of IT adoption), there can be no guarantee that other customers will achieve the same results.

On account of certain regional limitations of sales rights and service availability, we cannot guarantee that all products included in this case are available throughout the Siemens sales organization worldwide. All rights reserved.

Siemens Healthcare Headquarters
 Siemens Healthcare GmbH
 Henkestr. 127
 91052 Erlangen
 Germany
 Phone: +49 9131 84-0
siemens.com/healthcare