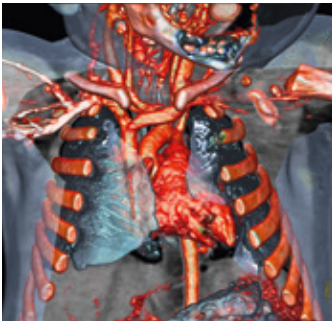


[siemens.com/SOMATOMEducate](https://www.siemens.com/SOMATOMEducate)

Workshop for Physicists

Forchheim, Germany



Course design and objectives

2-day course at the headquarters of Siemens Computed Tomography in Forchheim, Germany.

Participants will gain insight into the various state-of-the-art technologies and algorithms that Siemens has implemented to reduce the absorbed patient dose to a minimum. Topics such as CARE Dose4D, CARE kV, Turbo Flash scanning and iterative reconstruction techniques (e.g. SAFIRE*, ADMIRE*) will be discussed in detail. Additionally, dose considerations for Dual Energy applications are outlined. Learn how to perform the necessary quality controls and receive valuable tips and tricks.

Also included is a CT and detector factory tour, to experience first-hand how our CTs are manufactured.

Siemens Healthcare

Siemens experts from the physics department will guide you through the course while combining lectures with interactive discussions.

*In clinical practice, SAFIRE and ADMIRE may reduce CT patient dose depending on the clinical task, patient size, anatomical location, and clinical practice. A consultation with a radiologist and a physicist should be made to determine the appropriate dose to obtain diagnostic image quality for the particular clinical task. The following test method was used to determine a 54 to 60% dose reduction when using the SAFIRE reconstruction software. Noise, CT numbers, homogeneity, low-contrast resolution and high contrast resolution were assessed in a Gammex 438 phantom. Low dose data reconstructed with SAFIRE showed the same image quality compared to full dose data based on this test. Data on file.

Workshop for Physicists

Forchheim, Germany

Date details:

March 22–23, 2016

October 25–26, 2016

Course hours:

08:30 a.m. – 05:00 p.m. (first day)

08:30 a.m. – 04:00 p.m. (second day)

Course organizer:

Axel Lorz, HC DI CT MK CE

Participants:

Physicists with previous experience with MSCT and SOMATOM CT systems.

Number of participants:

5–12 (maximum)

Costs:

The course fee is €2,000.- excl. VAT including:

- Course material
- Lunch, coffee
- Hotel costs (2 nights)
- Bus transfer from hotel to course location

Location:

Siemens Healthcare GmbH
Siemensstrasse 1
91301 Forchheim
Germany

Registration:

ct.clinical.workshops.healthcare@siemens.com



Siemens Healthcare Headquarters
Siemens Healthcare GmbH
Henkestr. 127
91052 Erlangen
Germany
Phone: +49 9131 84-0
siemens.com/healthcare

CC CT 3507 1115 online | © Siemens Healthcare GmbH, 2015