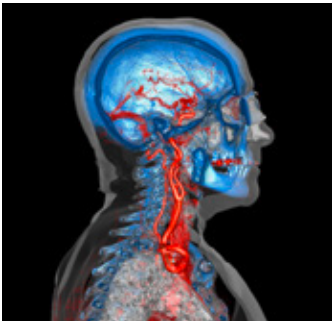


ct.clinical.workshops.healthcare@siemens.com

Clinical Workshop on Dual Energy

Forchheim, Germany



Course design and objectives

- This two-day workshop introduces participants to the physics principles of Dual Energy CT and provides a supervised hands-on study of clinical data sets using *syngo.via* workstations, followed by interactive proof-reading and discussions (e.g. *syngo.CT DE Brain Hemorrhage*, *syngo.CT DE Gout* or *syngo.CT DE Lung Analysis*). The course format is a combination of lectures and hands-on for post-processing to enhance your clinical practice skills and to provide you with insight on current and future developments. Also included is a Computed Tomography and detector factory tour, to experience first-hand how our systems are manufactured.
- Details on physics principles of Dual Energy
- Introduction on data acquisition and image reconstruction
- Interactive evaluation of data sets showing how to optimize data reconstruction and clinical results
- Clinically proven tips and tricks on patient examination

Professor Ralf Bauer, MD

Ralf Bauer is Professor of Radiology and Section Chief of Computed Tomography and Cardiac Imaging at the University Hospital Frankfurt. He studied medicine at the Johann Wolfgang Goethe-University Medical School in Frankfurt, Germany and graduated his medical licensing exam with excellence (grade 1.0) in 2007. He is an expert in pulmonary, vascular/lung and cardiovascular imaging and does a lot of research on Dual Source CT, Dual Energy applications and dose reduction strategies.

He is a member of several national and international radiological societies. He has been the author of more than 50 articles and has been invited as clinical speaker on CT imaging in various countries. Professor Ralf Bauer, MD, has conducted many hands-on workshops for dual energy as well as for cardiology.

Clinical Workshop on Dual Energy

Forchheim, Germany

Date details:

May 12–13, 2016

Course hours:

Thursday: 8:30 a.m. to 5:30 p.m.

Friday: 8:30 a.m. to 5:00 p.m.

Hotel:

Please contact:
ct.clinical.workshops.healthcare@siemens.com
for hotel recommendation

Course director:

Professor Ralf Bauer, MD

Participants:

This course is intended for radiologists, who would like to deepen their clinical knowledge and practical skills

Number of participants:

5–12 (maximum)

Costs:

The course fee is €2,000.– excl. VAT including:

- Course material
- Lunch, coffee
- Hotel costs (2 nights)
- Bus transfer from hotel to course location

Location:

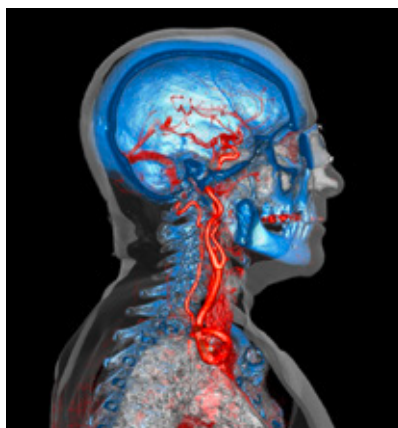
Day 1:
Siemens Healthcare GmbH
Siemensstrasse 1
91301 Forchheim
Germany

Day 2:
Siemens Healthcare Training Center
Allee am Roethelheimpark 3a
91052 Erlangen
Germany

A bus shuttle will be available to bring participants from the hotel in Erlangen to the workshop venues and return.

Registration:

ct.clinical.workshops.healthcare@siemens.com



Siemens Healthcare Headquarters

Siemens Healthcare GmbH
Henkestr. 127
91052 Erlangen
Germany
Phone: +49 9131 84-0
siemens.com/healthcare

CC CT 3507 1115 online | © Siemens Healthcare GmbH, 2015