

# Ultrasound – Designed for You.

ACUSON S Family™ Ultrasound Systems,  
HELX™ Evolution with Touch Control



## Workflow

12.1"

**touch display** with Instant Response Technology

- > Easy-to-navigate tab menus
- > Smart-adaptive annotations
- > Dynamic protocol options



44%

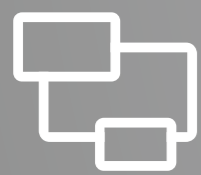
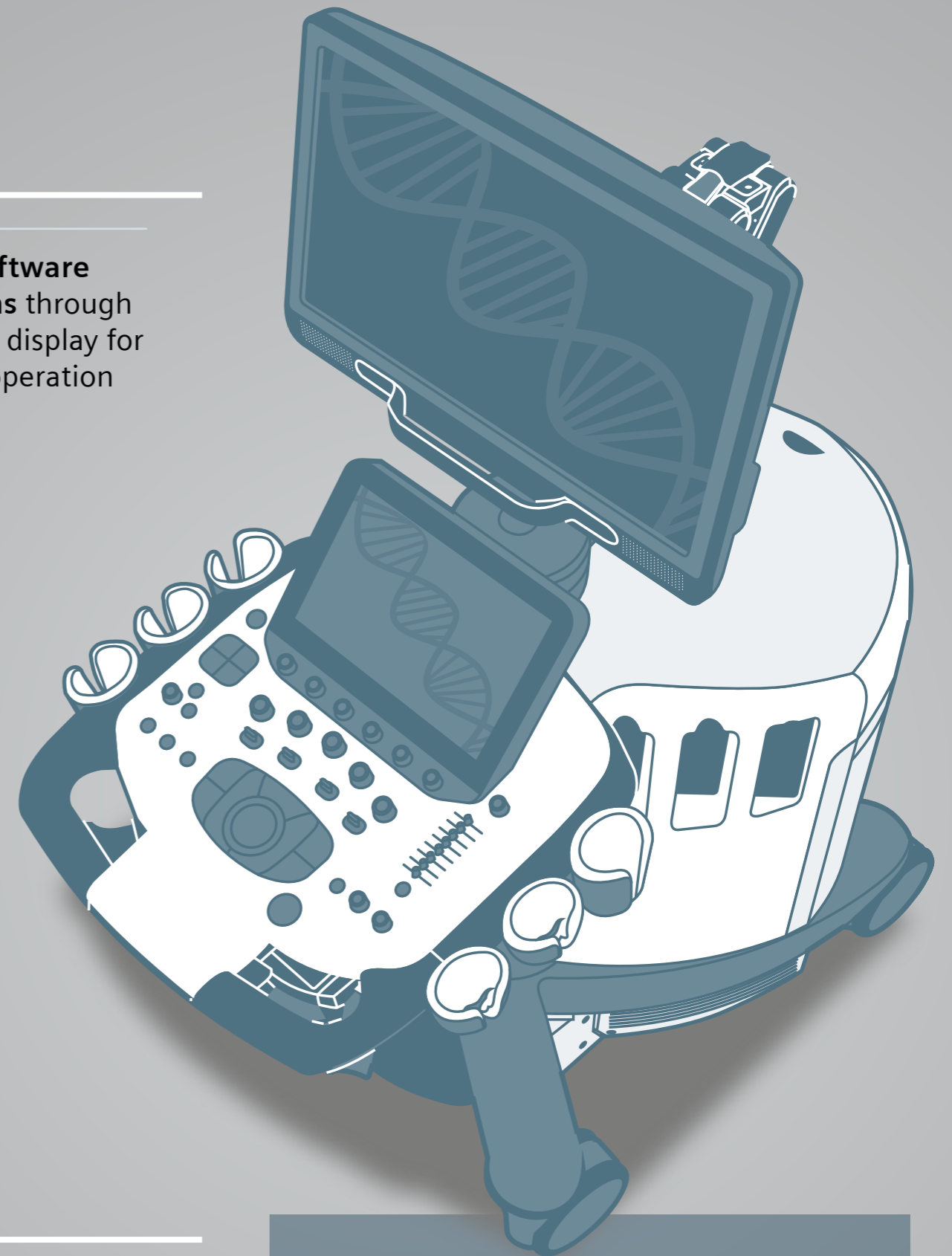
**fewer software selections** through heads-up display for no-look operation

33%

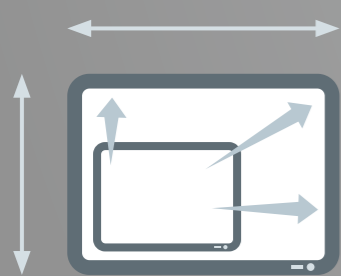
**fewer clicks** coupled with **dynamic backlighting** for intuitive guidance

22%

**fewer tactile keys** in home base simplifying the user interface



## Imaging Performance



**new large-format screen** with 60% bigger image area: **21.5-inch, LED-backlit, 1080p LCD monitor**

**more pixel density** for greater image resolution provided by SieStream™ HD architecture

50%

2x

**contrast resolution improvements** for 6C1 HD & 18L6 HD transducers for improved penetration and skin-line detection

80%

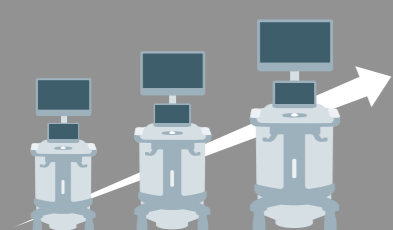
new hardware now supports firmware updates and diagnostics

75%

**accuracy for eSieFusion™ imaging** with pattern recognition software merging CT to ultrasound in real-time



## Sustainability



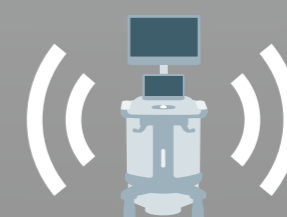
**upgradeability** and forward compatibility between systems



**recyclable**, meeting RoHS standards



integrated **gel warmer** with customizable positions



**supports high-speed wireless connectivity** for on-the-go DICOM reporting

## Excellent Reliability

Remote service, auto-calibration and streamlined hardware provide multiple improvements:

- ✓ **Fewer service visits**
- ✓ **All systems have Ultrasound System Security** for virus protection
- ✓ **> 70% first-time fix rate**
- ✓ **> 50% remote software updates**
- ✓ **Windows® 7 operating system** increasing network security protection