

ACUSON SC2000 PRIME

Mobility Enhancements

to Accelerate Your Workflow

New with
Release 5.0



The ACUSON SC2000 ultrasound system, release 5.0 has improved mobility with enhancements to the system design. This enables you to use the ACUSON SC2000 in more places for more exams from the Echo Lab for diagnosis and planning, to the Cath Lab for procedural guidance using 3D transesophageal echocardiography (TEE) and TrueFusion*.

**TrueFusion represents a workflow consisting of syngo® TrueFusion and TrueFusion™ echo-fluoro guidance.*

New additions to the system design of the ACUSON SC2000 include:

- Four casters with high-end bearings for easier turning and manipulation in tight places.
- Rear handle for easier maneuverability and micro adjustments.
- Front control panel lock for easier control and mobility allows repositioning of the control panel without a power source.

Enhanced features for better mobility

Control Panel Lock

62%

improvement in turning and steering performance with the new control panel lock and with the system in the ideal moving position.

Ideal moving position, as depicted, is:

- Control panel in outmost position
- Casters turned away from system

Rear Handle

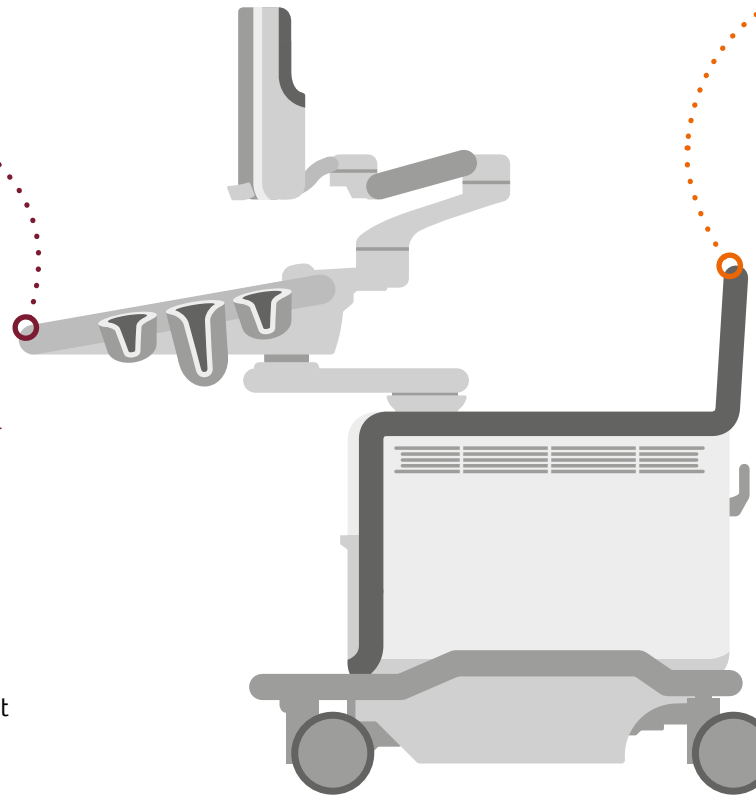
70%

improved leverage from the rear handle.

60%

Less turning force required with new casters.

Casters with high-end swivel bearings



Mobility improvements derived from mechanical testing on the ACUSON SC2000 system.

Siemens Healthineers Headquarters

Siemens Healthcare GmbH
Henkestr. 127
91052 Erlangen, Germany
Phone: +49 913184-0
siemens-healthineers.com

Legal Manufacturer

Siemens Medical Solutions USA, Inc.
Ultrasound
685 East Middlefield Road
Mountain View, CA 94043, USA
Phone: +1-888-826-9702
siemens.com/ultrasound

The products/features are not commercially available in all countries. Due to regulatory reasons their future availability cannot be guaranteed. Please contact your local Siemens organization for further details.