

# Balloon angioplasty in CTEPH

web stenosis A 4

*For syngo  
iFlow  
no separate  
DSA runs are  
necessary*

## Vascular Interventions

### Study Protocol

#### Courtesy of

PD Dr. Jan Hinrichs, MD  
Institute for Diagnostic  
and Interventional Radiology,  
Hannover Medical School,  
Germany

#### Supported by

*syngo iFlow*

#### System & Software

ARTIS pheno VE1 with *syngo*  
Application Software VD2

### Case Description

#### Patient history

74-year-old female patient with  
history of recurrent pulmonary  
embolism and chronic thrombo-  
embolic pulmonary hypertension  
(CTEPH).

#### Diagnosis

CTEPH with perfusion defects.

#### Treatment

In the third balloon angioplasty  
procedure, we focused on the right  
middle and right upper lobe.

#### General comments

With *syngo iFlow* we were able to  
visualize the improvement of peri-  
pheral filling of the treated vessels.

ROIs create contrast concentration  
versus time curves.

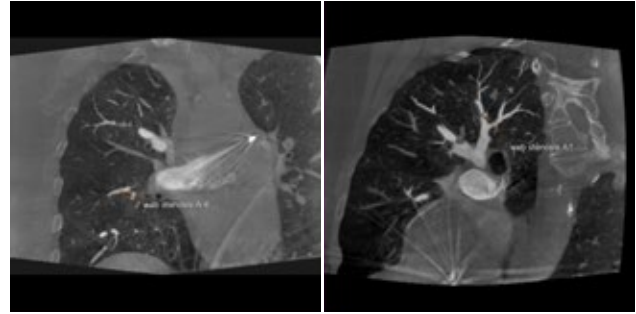
#### Tips and tricks

For the use of *syngo iFlow*, 4 F/s  
DSA run is sufficient. No separate  
DSA runs are necessary.

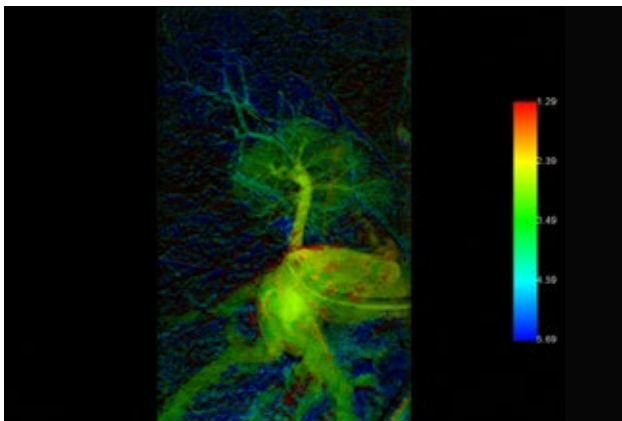
Coordinate timing of injection  
for direct pre- and posttreatment  
comparison.

## Balloon angioplasty in CTEPH

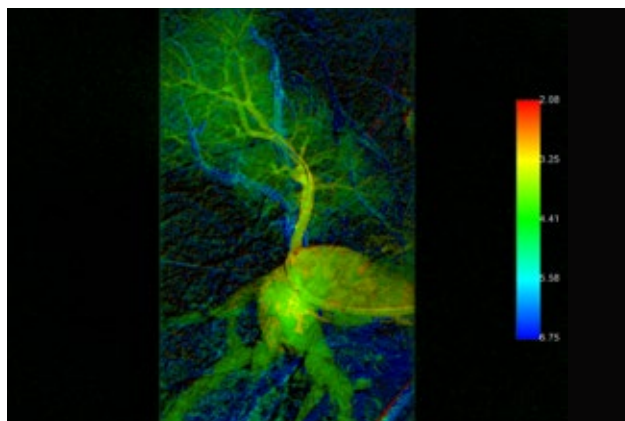
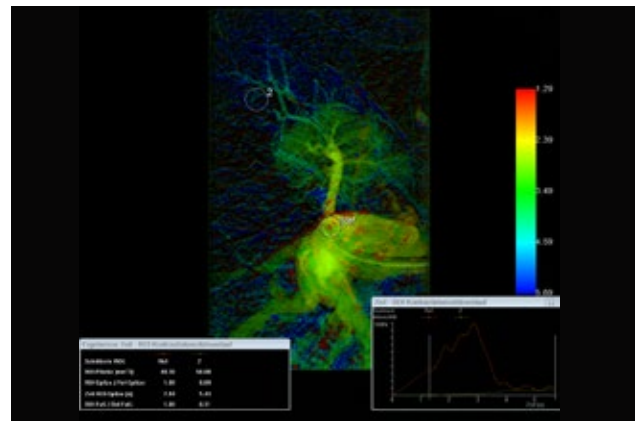
Acquisition protocol	DSA 4 F/s ~27 frames
Injection protocol	
Catheter position	Upper right lung lobe artery
Contrast medium (CM)	300 mg iodine/mL
Dilution	60%
Injection volume	8 mL
Injection rate	Hand injection
Duration of injection	7s
X-ray delay	Injection starts right after mask image
Power injector used	No



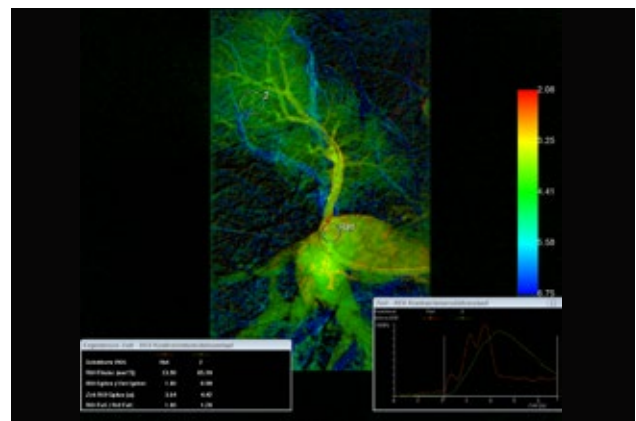
Web stenoses visible on syngo DynaCT images



syngo iFlow before angioplasty



syngo iFlow after angioplasty visualizes the improvement of peripheral blood flow



### Siemens Healthineers Headquarters

Siemens Healthcare GmbH  
 Henkestr. 127  
 91052 Erlangen, Germany  
 Phone: +49 9131 84-0  
 siemens-healthineers.com

The statements by Siemens' customers presented here are based on results that were achieved in the customer's unique setting. Since there is no "typical" hospital and many variables exist (e.g., hospital size, case mix, level of IT adoption), there can be no guarantee that other customers will achieve the same results.

On account of certain regional limitations of sales rights and service availability, we cannot guarantee that all products included in this case are available throughout the Siemens sales organization worldwide.  
 All rights reserved.