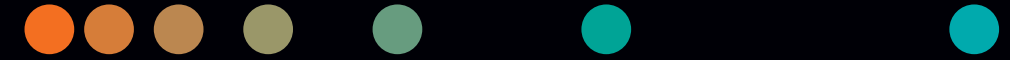
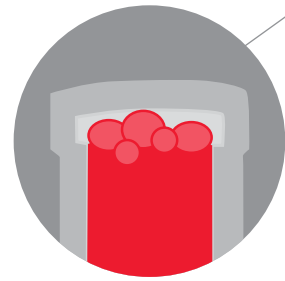


# Maximize uptime with proper sample handling technique

siemens-healthineers.com/poc



Have the right electrolyte-balanced **heparin concentration** in the sample device



It is important to **cap the syringe & remove air bubbles** immediately after drawing the sample

For a capillary sample **fill completely & seal the capillary at both ends**



Be sure to **label the sample**



Do NOT use quaternary ammonium substances, such as **benzalkonium** as a cleaning agent

Mix the sample first in a **figure 8** motion for **20** seconds



Continue mixing by **rolling between hands** **~10** times



Sample analysis should be performed **as soon as possible** after the draw and no longer than **30 minutes**