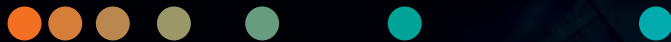


Atellica Diagnostics IT

**Less work.  
More flow.**

Data-driven innovation  
to simplify workflows

[siemens-healthineers.com/atellica-diagnostics-it](https://siemens-healthineers.com/atellica-diagnostics-it)





## Get the Most Out of Your Lab

with Atellica Diagnostics IT

Consolidation, standardization, and a shift to value-based care are defining trends of 21st-century healthcare.

This paradigm shift has put tremendous pressure on the lab as lab directors seek to manage costs and increase testing volumes, often with a reduction in staffing. Compounding matters, many lab directors face additional difficulties, including integration of legacy systems and finding, training, and retaining qualified staff. They are increasingly looking to automation and digital solutions to help meet these challenges.

Designed in response to these needs and expectations, the Atellica® Diagnostics IT portfolio enables you to get more out of your lab.

### **Data-driven innovation: Making it possible to digitalize best practices**

Diagnostic testing is complex. Running a lab, managing inventory, and integrating a variety of analyzers, automation systems, and laboratory information systems (LIS) can be daunting. Siemens Healthineers understands your day-to-day frustrations and shares your vision of what 21st-century diagnostics can be. That's why we created a suite of IT solutions that will enable you to simplify the operational challenges and testing complexities you face in your lab.

With more than 20 years of leadership in lab automation and IT, Siemens Healthineers uses the knowledge we've gained to increase the efficiency of laboratories of all sizes. We've integrated this expertise with the best practices of thousands of labs around the world. The result: data-driven products that can help you optimize operations in your lab. And Atellica Diagnostics IT can help you dig deeper into your operations to understand what's driving your performance—and how to improve it. That's what we mean by data-driven innovation.

### **Atellica Portfolio of Laboratory Products**

**Engineered by  
Siemens Healthineers  
to deliver control and  
simplicity so you can  
drive better outcomes.**

Tighter control of your lab, simplified workflow, and more time to focus on driving better business and clinical outcomes—that's the promise of our Atellica® portfolio of laboratory products.

**Control.  
Simplicity.  
Better  
Outcomes.**



# Leveraging Data to Overcome Today's Challenges

## Simple. Open. Scalable.



Atellica Diagnostics IT offers easy-to-use solutions that can maximize the effectiveness of your laboratory and its staff. Powerful features and intuitive design help you to quickly identify, investigate, and resolve your most pressing operational issues. And the robust connectivity of this next-generation software supports most third-party systems and extends to multiple sites to meet consolidation demands.

- Growing library of 700+ device drivers
- Standardized, user-friendly, modern interface
- Scalable options that support small labs with multiple instruments or the largest of enterprises with multiple lab networks

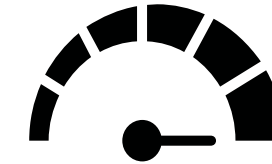
## Unified data.



Atellica Diagnostics IT unifies data from your instrument and automation systems, combining sample, process, result, QC, and inventory data for greater insights. This gives you greater visibility into your lab's clinical, operational, and financial performance every step of the way, from sample collection to results reporting.

- Drill-down, real-time analytics
- Ready-to-use interactive reports to identify and address root causes of performance issues
- Standardization of results and reporting across the enterprise to reduce unwarranted variations and improve result quality

## Optimized workflow.



Advanced tools help your team automate processes and improve efficiency throughout your lab. Increase workforce productivity and reduce errors, costs, and turnaround times.

- Reduce manual tasks and simplify processes.
- Centralize management across multiple labs for a wide variety of tasks.
- Implement user-customized dashboards and alerts to focus staff's attention where it's needed most.
- Gain easy access to details needed to make informed and accurate decisions.
- Simplify data collection and processing activities and automate the reporting of key performance indicators.

## Powerful integration.



Atellica Diagnostics IT complements our comprehensive portfolio of lab innovations and services.

- Atellica® Solution immunoassay and clinical chemistry analyzers provide unprecedented flexibility, revolutionary sample management, and a broad assay menu with proven detection technologies for game-changing diagnostic performance.
- Aptio® Automation advances your laboratory's productivity by combining intelligent technologies with Siemens Healthineers workflow expertise in highly adaptable multidisciplinary track configurations.
- Siemens Healthineers Healthcare Consulting Services give you the expertise you need to plan, implement, and operate your laboratory.

## Real results in real labs.

**93%** A hospital in China reported a 93% reduction in testing errors after adopting Atellica Diagnostics IT data management.<sup>1</sup>

**88%** A regional hospital in the U.S. achieved 88% compliance on 30-minute STAT turnaround times.<sup>2</sup>

**85%** A busy urban hospital in China increased staff satisfaction by 85% by using advanced data management to automate workflows.<sup>1</sup>

The outcomes obtained by the Siemens Healthineers customers described here were realized in the customers' unique settings. Since there is no typical laboratory, and many variables exist, there can be no guarantee that others will achieve the same results.

1. Wen D, et al. Establishment and application of an autoverification system for chemistry and immunoassay tests. 69th AACC Annual Scientific Meeting Abstracts. 2017.  
2. Columbus Regional Health leverages informatics and automation efficiency. Siemens Healthcare Diagnostics Inc. 30-19-13821-01-76. 2019 May.

# Innovation to Unlock Performance



## Atellica® Data Manager

Standardize testing and streamline result management across your diagnostics network with a customizable, scalable middleware solution.

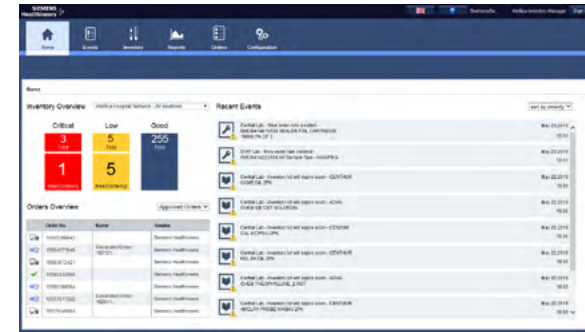
- Strengthen QC with integrated tools to improve monitoring.
- Implement advanced workflows and powerful autoverification rules.
- Avoid compliance issues and enable audit readiness.
- Tailor screens and functionality to specific user needs.



## Atellica® Process Manager

Control and optimize processes with centralized oversight and actionable built-in analytics.

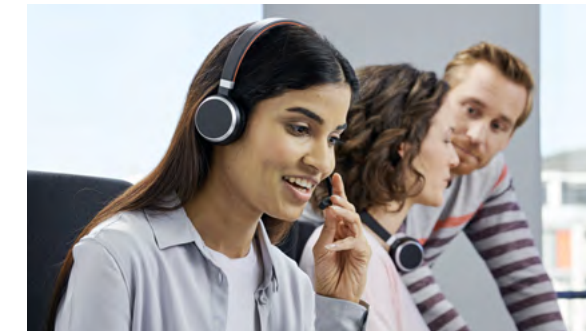
- Identify issues quickly with a centralized dashboard.
- Optimize operations using advanced analytics, including metrics such as TAT, problem samples, throughput, and more.
- Meet TAT targets with proactive, user-defined alerts.
- Control systems\* and review testing exceptions from one screen to improve productivity.



## Atellica® Inventory Manager

Automate reagent and consumable management across multiple lab locations to reduce costs, save time, and improve quality.

- Simplify inventory check-in and check-out with pre-labeled† RFID technology.
- Automate ordering processes and consumption tracking.
- Optimize inventory levels to reduce waste.
- Establish low stock alerts to avoid emergency orders.



## Atellica® Connectivity Manager

Enhance connectivity, enable data integration, and maximize performance across your network.

- Optimize instrument performance with remote system monitoring and timely, proactive troubleshooting.
- Minimize the need for on-site maintenance of systems with remote system services, including updates, remote desktop sharing, and/or remote troubleshooting.
- Enable continuous security, patient privacy, and regulatory compliance.

## Partner with us

Make operational problems a part of your past and the promise of laboratory diagnostics part of your future.

## Clinical decision support systems

The capabilities and usefulness of clinical decision support solutions continue to grow with the rapid development of artificial intelligence (AI) and related technologies. Our integrated decision support systems enable labs and the physicians they support to make confident decisions and provide the best patient care.

**AI Pathway Companion**† is an AI-driven solution that aims to aggregate patient history and results from imaging, laboratory, pathology, genetics, and clinical studies and evaluates the data to determine next steps in the treatment pathway.

**PRISCA System**§ is an advanced prenatal risk calculation system that uses biochemical markers, ultrasound measurements, and demographics to accurately calculate risks.

**PROTIS® System**§ enables clinicians to review multiple test results for patients in a single, consolidated report. Doctors can evaluate iron and anemia, nutrition, cardiac, kidney, and cerebral spinal fluid (CSF) tests all at once, allowing them to diagnose and treat patients more effectively.

Learn more about Atellica Diagnostics IT at: [siemens-healthineers.com/atellica-diagnostics-it](https://www.siemens-healthineers.com/atellica-diagnostics-it)

\*Instruments require virtual network computing (VNC) or Remote Desktop capability. Not available on all systems.

†Availability of Siemens Healthineers RFID pre-labeled reagents and consumables varies by country.

‡Under development. Not available for sale. Future availability cannot be guaranteed.

§Not available for sale in the U.S.

At Siemens Healthineers, our purpose is to enable healthcare providers to increase value by empowering them on their journey toward expanding precision medicine, transforming care delivery, and improving patient experience, all made possible by digitalizing healthcare.

An estimated 5 million patients globally benefit every day from our innovative technologies and services in the areas of diagnostic and therapeutic imaging, laboratory diagnostics, and molecular medicine, as well as digital health and enterprise services.

We are a leading medical technology company with over 120 years of experience and 18,000 patents globally. Through the dedication of more than 50,000 colleagues in 75 countries, we will continue to innovate and shape the future of healthcare.

Atellica, PROTIS, and all associated marks are trademarks of Siemens Healthcare Diagnostics Inc., or its affiliates. Aptio Automation is manufactured by Inpeco and is exclusively distributed by Siemens Healthcare Diagnostics Inc. Aptio is a trademark of Siemens Healthcare Diagnostics Inc. Inpeco is a trademark of Inpeco SA. All other trademarks and brands are the property of their respective owners.

Product availability may vary from country to country and is subject to varying regulatory requirements. Please contact your local representative for availability.

---

**Siemens Healthineers Headquarters**

Siemens Healthcare GmbH  
Henkestr. 127  
91052 Erlangen, Germany  
Phone: +49 9131 84-0  
siemens-healthineers.com

**Published by**

Siemens Healthcare Diagnostics Inc.  
Laboratory Diagnostics  
511 Benedict Avenue  
Tarrytown, NY 10591  
USA  
Phone: +1 914-631-8000