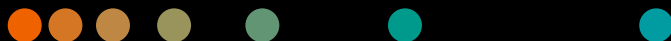


Improving patient experience

# Outcomes that matter: One minute can make the difference after a stroke\*

[siemens-healthineers.com/deliver-outcomes](https://www.siemens-healthineers.com/deliver-outcomes)



The patient's voice is becoming increasingly important. More than three quarters of patients consider reputation when choosing a hospital. At the same time, growing out-of-pocket expenditure is fueling consumerism.

For patients, once they are diagnosed and have a defined care path, health outcomes are among the factors that matter most.<sup>1</sup> "Outcomes" refers to both clinical and patient-reported health status.<sup>2</sup> However, without engagement and communication, individual expectations will remain unclarified and therefore difficult to achieve.

<sup>1</sup> Patient Experience Journal, Vol. 3. Issue 1, Patient experience: Driving outcomes at the heart of healthcare J. A. Wolf CPXP, PhD,

<sup>2</sup> International Consortium for Health Outcomes Measurement (ICHOM): [medscape.com/viewarticle/813443](https://www.medscape.com/viewarticle/813443) (viewed latest on June, 12th, 2019)

<sup>3</sup> AHA Journals, Stroke: [stroke.ahajournals.org/content/45/4/1053.long](https://stroke.ahajournals.org/content/45/4/1053.long), (viewed June, 12th 2019), A. Meretoja, et al.,

<sup>4</sup> thebmj, Adverse events in British hospitals: preliminary retrospective record review: [bmj.com/content/322/7285/517](https://www.bmj.com/content/322/7285/517), short using an average yearly exchange rate 2001 of EUR/GBP of 0.62, (viewed latest on June, 12th, 2019)

<sup>5</sup> Patient engagement strategies that prevent hospital readmission: [patientengagementthit.com/news/patient-engagement-strategies-that-prevent-hospital-readmission](https://patientengagementthit.com/news/patient-engagement-strategies-that-prevent-hospital-readmission), (viewed latest on July, 29th)

<sup>6</sup> How a hybrid operating room is paying off: [healthcare.siemens.com/magazine/mso-spine-surgery.html](https://www.healthcare.siemens.com/magazine/mso-spine-surgery.html) (viewed latest on July, 28th 2019)

<sup>7</sup> Effect of early physician follow-up on mortality and subsequent hospital admissions after emergency care for heart failure: a retrospective cohort study. CMAJ. 2018 Dec 17;190(50):E1468-E1477. doi: 10.1503/cmaj.180786. Atzema CL, et al.

<sup>8</sup> The products/features are not commercially available in all countries. Due to regulatory reasons their future availability cannot be guaranteed.

<sup>9</sup> syngo.via Cinematic VRT is for communication, education and publication purposes and not intended for diagnostic reading.

A lack of focus on long-term quality of life.

1 min\* 

In stroke cases, one minute of onset-to-treatment time makes the difference between being able or unable to wash yourself.<sup>3</sup>

Compromised patient safety and adverse events leads to additional costs.

180k EUR 

Extra days in hospital due to an adverse event can increase costs by 180k EUR.<sup>4</sup>

Poor engagement of patients and families – leads to higher readmission rates.

1.75 

Readmission rates after treatment are 1.75 times higher among less engaged patients.<sup>1</sup>

## How we can support to deliver outcomes that matter to patients

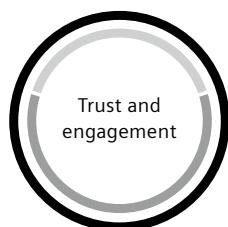


- Build trust in and engagement with treatment through seamless access to interconnected, concise medical information.

- Reduce acute complications by image-guided, minimally invasive therapy with quality & infection control.
- Focus on healthy and productive life, by early warning and effective, safe follow-ups.

- 25%

readmissions by engaging patients and families<sup>5</sup>



### Get seamless access to interconnected patient data

Vendor Neutral Archiving (VNA)<sup>8</sup> permits a holistic view of patient data and incorporates patient-centric apps (e.g., taking images at the point of care).



### Produce clear and concise medical information

syngo.via Cinematic VRT<sup>9</sup> delivers easy-to-understand medical information (e.g., about a planned surgery approach).

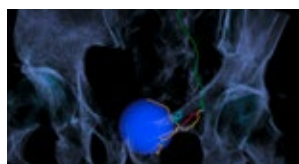
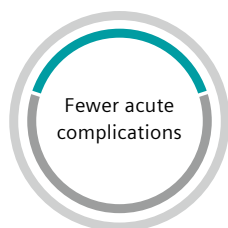


### Connect with and educate patients and families

PEPconnect & PEPconnections provide online access to learning activities, and staff education to provide better patient and caregiver experience.

< 0.2%

complications due to screw misplacement<sup>6</sup>



### Leverage image-guided minimally invasive therapy

Planning and Guidance Tools for Angiography support locoregional therapy based on syngo DynaCT, and syngo Needle Guidance for ablations and syngo Embolization Guidance.



### Master intraoperative quality control

ARTIS pheno enables intraoperative quality control to avoid misplaced screws or implants in ortho, trauma, spine surgery, and save postoperative CT scan.



### Detect sepsis early

Atellica<sup>®</sup> IM B-R-A-H-M-S PCT Assay achieve early sepsis risk assessment to help improve patient outcomes, including reduced morbidity and mortality with the ability to make confident decisions in minutes.

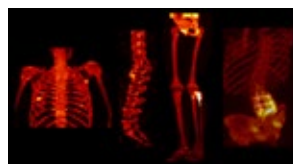
- 67%

relative risk of mortality from prostate cancer in screened population<sup>7</sup>



### Assure early warnings of disease recurrence

Serum HER-2/neu Test assists physicians to monitor and manage therapy options for patients with metastatic breast cancer whose initial serum levels are >15 ng/mL.



### Enable consistent and effective follow-ups

<sup>68</sup>Ga-PSMA PET/CT and xSPECT Quant<sup>™</sup> adapt follow-up response for biochemical recurrence in patients with rising PSA following prior treatment.<sup>8</sup> (e.g., Biograph Vision / Symbia Intevo<sup>™</sup> SPECT/CT).



### Commit to long-term patient safety

Right-dose imaging protocols, CARE and templay Dose reduce risk of potential long-term negative effects through radiation exposure.