

Cios Alpha

Vascular Suite Package

The Cios Alpha with IDI Table ASPECT ISR G3

siemens-healthineers.us



In a busy surgical suite, the need for fast, high-quality images is paramount. A mobile C-arm that is difficult to operate can frustrate surgical teams, waste time, and increase operating costs.

With the Cios Alpha from Siemens Healthineers, you and your clinical team can have the superior images you need when you need them. Our Cios Alpha mobile C-arm with flat panel detector is built to be your partner in performance, with high-quality imaging and product flexibility to support your most critical surgical setting—and your budget.

Simplified Operation

- Provides large overall free space to accommodate larger patients and provide more room to work.
- Easy-to-use touch screen interface with a user guided vascular workflow.
- Surgeon has complete system control within the sterile field, utilizing the remote table-side control.
- Motorization package for precise movement and position recall at the touch of a button.

Intelligent Power Management

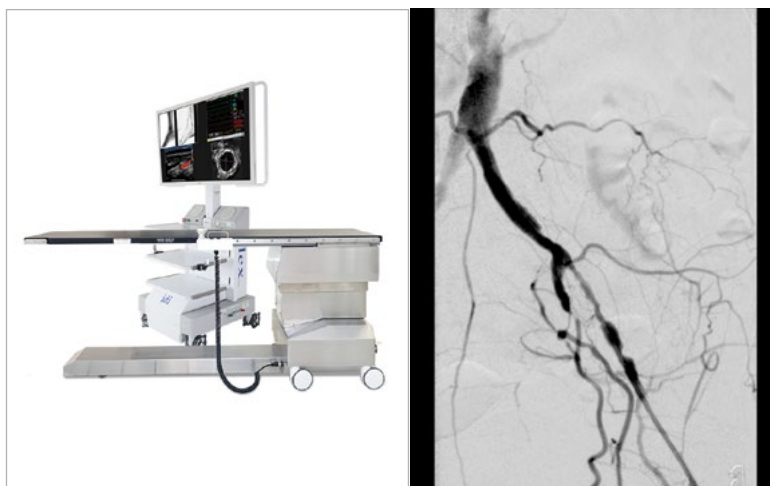
- Large power reserves and active cooling supports prolonged cases without worrying about overheating.
- Cios Alpha's energy storage unit (ESU option) buffers energy, tripling the mean power that can be applied for the most challenging surgical situations.
- Provides optimized balance of image quality and low dose in all relevant clinical applications and for patients of nearly every size.

Greater Visibility

- 25% more anatomical coverage with Full View Flat Detector can mean less C-arm repositioning and fewer exposures.
- Exceptional image resolution and visualization of small structures with flat detector technology.
- Automatic contrast and brightness control for optimized image quality.

IDI ASPECT ISR G3 Vascular Table

- Elevate and Tilt functions are fully motor driven—no hydraulics!
- Trendelenburg Tilt: $\pm 12^\circ$ with automatic “stop-at-level” positioning
- Lateral roll: $\pm 12^\circ$, isocentric
- 4-way manual floating tabletop with panning hand control
- Patient weight capacity: 450 lbs. (204 kg) with full table functionality at max. patient weight



Subtracted Angiography iliofemoral arteries

Ilex 55* The first large field 4K mobile monitor system

- 55" UHD 4K monitor
- Display up to four HD images at one time
- Reduces the need for magnification—dose reduction with less eye strain
- Easy to install, configure, or upgrade

**Not included in price.*

Financing options available

Siemens Financial Services (SFS) is the financial division of Siemens Healthineers. Our industrial expertise, paired with financial know-how, provides customers with access to a breath of solutions that offers clients a strategic advantage. Whether you're looking to conserve cash or credit lines, accelerate business or increase operational flexibility, we can help you achieve your goals.

Siemens Healthineers Headquarters

Siemens Healthcare GmbH
Henkestr. 127
91052 Erlangen, Germany
Phone: +49 9131 84-0
siemens-healthineers.com

USA

Siemens Medical Solutions USA, Inc.
Healthcare
40 Liberty Boulevard
Malvern, PA 19355-9998, USA
Phone: +1-888-826-9702
siemens-healthineers.us

On account of certain regional limitations of sales rights and service availability, we cannot guarantee that all products included in this brochure are available through the Siemens Healthineers sales organization worldwide. Availability and packaging may vary by country and is subject to change without prior notice. Some/All of the features and products described herein may not be available in the United States.

The information in this document contains general technical descriptions of specifications and options as well as standard and optional features, which do not always have to be present in individual cases.

Siemens Healthineers reserves the right to modify the design, packaging, specifications, and options described herein without prior notice. For the most current information, please contact your local sales representative from Siemens Healthineers.

Note: Any technical data contained in this document may vary within defined tolerances. Original images always lose a certain amount of detail when reproduced.