

# Dual Energy CT in Daily Practice Clinical Workshop

Forchheim, Germany



## Course design and objectives

This two-day workshop for radiologists and technologists will provide you with profound knowledge and practical skills in using the diagnostic possibilities of Dual Energy CT in your daily clinical routine. Experts of the Siemens R&D-Team will introduce you to the physics and background of image acquisition, reconstruction and analysis. The clinical presentations will be held by Moritz Albrecht, MD for Dual Energy CT applications in the entire body for various oncologic, vascular and musculoskeletal indications.

The course format consists of a combination of lectures and focused hands-on sessions to enhance both your diagnostic knowledge on Dual Energy CT and practical skills in using the dedicated software. Furthermore, this course comprises a Computed Tomography factory and detector center tour to experience first-hand how our systems are manufactured.

## Course content

- Physics of Dual Energy CT
- Clinical presentations on Neuro, Head and Neck, Cardiothoracic, Abdomen, MSK, Vascular and Emergency Applications
- Instructions on buttonology and workflow
- How-to-do it: acquisition, reconstruction and interpretation of Dual Energy CT data
- CT factory and detector center tour
- Interactive hands-on evaluation of datasets using *syngo.via* workstations for each clinical module
- Practical insights and clinical advice for your routine use of Dual Energy CT

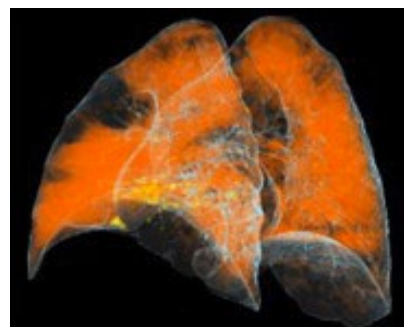
## Clinical speaker

Moritz Albrecht, MD is a radiologist and head of CT Research at the Department of Radiology of the University Hospital Frankfurt, where he has been using Dual Energy CT head-to-toe for many years in clinical routine.

Dr. Albrecht is author of numerous research papers and review articles in Dual Energy CT including publications in the journals *Radiology* and *Investigative Radiology*. He shared his knowledge in Dual Energy CT in specific online tutorials, as well as educational lectures held in part during the RSNA annual meeting. He also contributed to and participated in several Dual Energy CT hands-on workshops in Europe and the United States.

Learn from his experience using Dual Energy CT and gain valuable knowledge and practical insights for your everyday work.

[siemens.com/SOMATOEducate](https://www.siemens.com/SOMATOEducate)



Courtesy of University Hospital Frankfurt am Main, Frankfurt am Main, Germany

# Dual Energy CT in Daily Practice Clinical Workshop

Forchheim, Germany

**Date details:**

May 11–12, 2020

**Course hours:**

Monday: 8:30 am to 5:15 pm

Tuesday: 8:30 am to 4:15 pm

**Course director:**

Moritz Albrecht, MD

**Course organizer:**

Katrin Seidel, SHS DI CT M&S CE

**Participants:**

This course is primarily intended for radiologists and CT technologists.

**Number of participants:**

5–12 (maximum)

**Costs:**

The course fee is €2,000 excl. VAT including:

- Course material
- Lunch, coffee
- Hotel costs (2 nights)
- Bus transfer from hotel to course location

**Location:**

Siemens Healthcare GmbH

Siemensstrasse 3

91301 Forchheim

Germany

A bus shuttle will be available to bring participants from the Novotel hotel in Erlangen to the workshop venue and return.

**Registration:**

[ct.clinical-workshop.team@siemens-healthineers.com](mailto:ct.clinical-workshop.team@siemens-healthineers.com)

**Canceled due to coronavirus**

---

**Siemens Healthineers Headquarters**

Siemens Healthcare GmbH

Henkestr. 127

91052 Erlangen, Germany

Phone: +49 9131 84-0

[siemens-healthineers.com](http://siemens-healthineers.com)