



SIEMENS

Vascular Imaging

The Best of What Matters Most: A Smart Solution for Vascular Imaging

ACUSON X600™ Ultrasound System

Without compromise, the ACUSON X600 ultrasound system delivers what matters most: unparalleled quality of patient care and industry-leading system reliability.

Engineered on a robust system architecture and with advanced state-of-the-art technologies migrated from our premium systems, the ACUSON X600 system sets a new standard of “standard” in imaging performance and workflow efficiencies. This gives you the freedom to grow and adapt to the clinical demands in Vascular Imaging.

Advanced Imaging

We believe you want to put your money where it matters most. That’s why the ACUSON X600 system is built with an advanced imaging engine packed with premium technologies to give you the diagnostic confidence you need. Superb 2D imaging resulting from features like Advanced SieClear™ spatial compounding and Dynamic TCE™ tissue contrast enhancement technology provide exceptional detail and contrast resolution. Clarify™ vascular enhancement (VE) technology further optimizes resolution and definition of both tissue and vessel according to user preference.

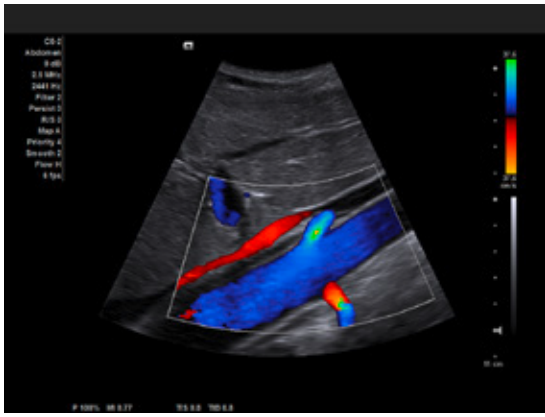
Built to Work Smart

With thoughtful engineering to create true value, the ACUSON X600 system offers reliability, ergonomic design and efficient workflow. The system provides quick access to frequently used controls and multiple customizations of imaging presets including measurement and reporting packages. Smart productivity features like our syngo® Arterial Health Package (AHP) include advanced quantification for arterial health assessment, while TGO™ tissue grayscale optimization technology provides one-button optimization to adjust brightness and equalize overall gain for a more streamlined scanning experience.

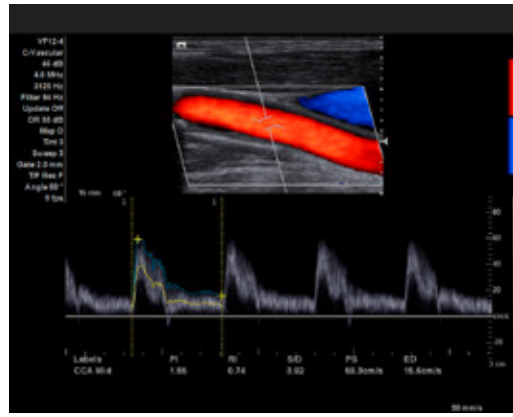
Progress and Protection

Built on the solid foundation of proven reliability, the ACUSON X600 system delivers dependability so you can deliver the same to your patients. With low cost of ownership, it is a cost-effective core solution that can evolve and adapt with your practice, without compromise.

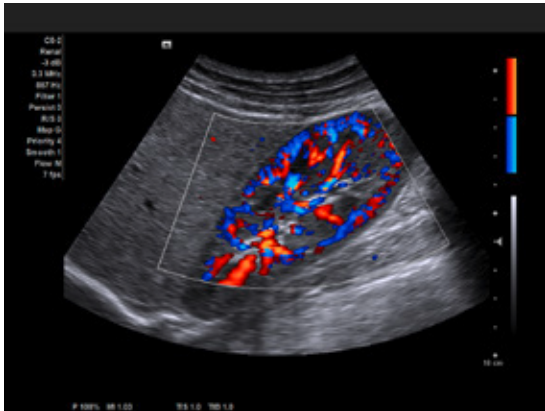
Clinical Image Gallery



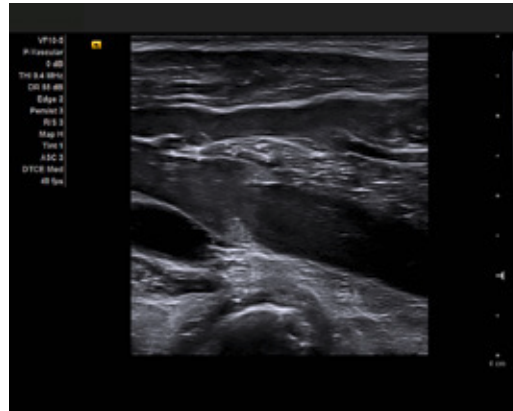
Left:
Color Doppler of the aorta and renal origins.



Right:
Color and pulsed wave Doppler of the common carotid artery.



Left:
Color Doppler of renal vasculature.



Right:
Popliteal vein valves.



Left:
syngo® Arterial Health Package automatically measures the intimal thickness of the common carotid artery.



Right:
Lower leg varicosities.

ACUSON X600, Advanced SieClear, Clarify, Dynamic TCE, and TGO are trademarks of Siemens Medical Solutions USA, Inc. and syngo is a trademark of Siemens AG.

Siemens Healthcare Headquarters
Siemens Healthcare GmbH
Henkestraße 127
91052 Erlangen
Germany
Phone: +49 9131 84-0
siemens.com/healthcare

Legal Manufacturer
LHPHVDHLD BROXWLRV6
OWUVRX
WVWUHHW
VX6
RH
VLHPHVHDLHUVRPXOWUVRX

Order No. A91US-342-1C-4A00 | Printed in Germany | CG 2695 0615.X | © Siemens Medical Solutions USA, Inc., 2015