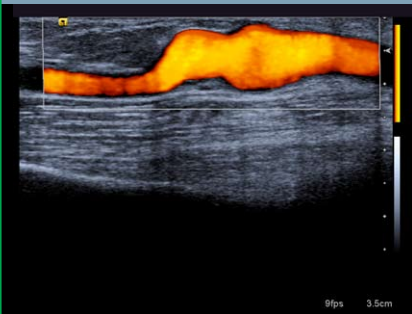


Vascular Imaging



The ACUSON S2000™ ultrasound system is a comprehensive imaging system engineered to meet today's most challenging vascular imaging cases. Consistent image quality is easily accomplished through advanced features such as TEQ technology and Clarify VE technology. eSieScan™ workflow protocols save valuable time and keystrokes by automating routine vascular exam tasks so the main focus is on the patient.

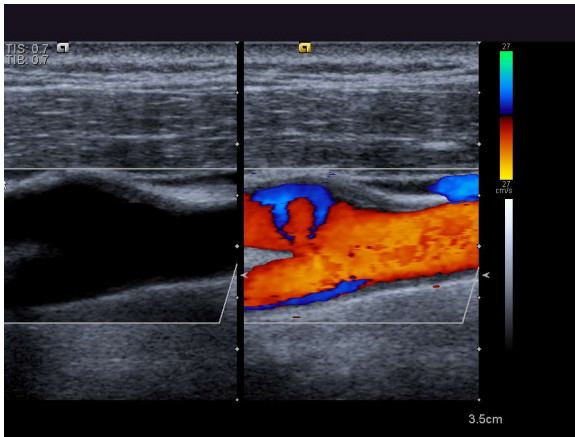
Highlights

- **syngo® Arterial Health Package (AHP):**
Features a semi-automated application for measuring carotid intima-media wall thickness (CIMT)—a reliable, non-invasive method for quickly evaluating cardiovascular risk. Normative tables that have been validated and published in peer-reviewed studies can be referenced from syngo AHP.
- **Clarify™ Vascular Enhancement (VE) Technology:**
Reduces noise and artifacts to provide exceptional contrast resolution and clear delineation of micro- and macrovasculature in superficial organs and vessels.
- **Virtual Format:**
Increases anatomical information at the touch of a button with trapezoidal imaging format. 2D beam-steering improves the angle of insonation especially when access is challenging.
- **SieScape™ panoramic imaging:**
Provides extended field of view images acquired with real-time high-resolution grayscale or power Doppler imaging. Allows the display of the entire length of a vessel in applications such as vein mapping, providing a global view for orientation.
- **TEQ™ ultrasound technology**
Provides single-button optimization of 2D and spectral Doppler imaging for consistent imaging and streamlined workflow.
- **DICOM Structured Reporting:**
Streamlines clinical reporting by automatically transferring patient and calculation data to DICOM vascular reporting packages.

ACUSON S2000 ultrasound system
Powerful clinical applications for advanced vascular imaging

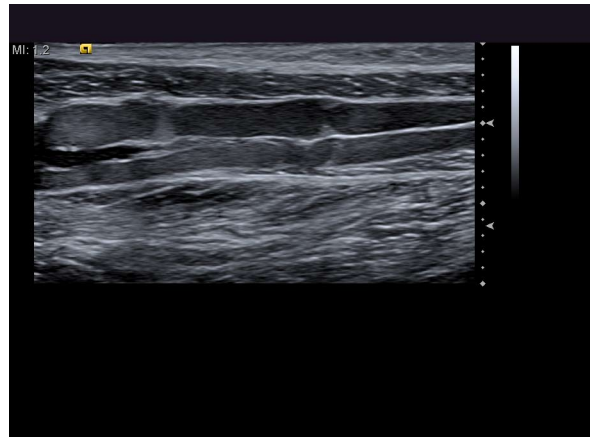
www.siemens.com/healthcare

SIEMENS



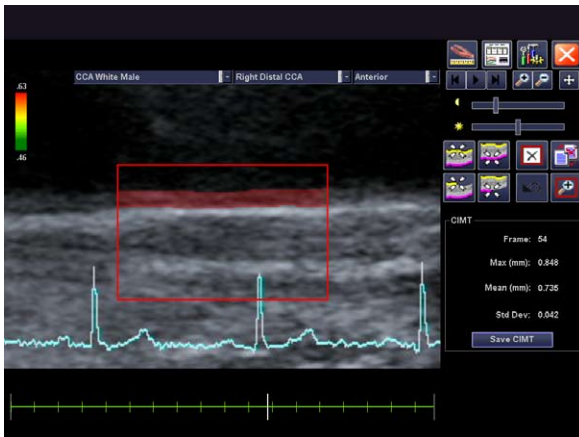
Clarify™ vascular enhancement technology

- Dual image showing flow dynamics in the bulb of the common carotid artery. Exclusive algorithm enhances vascular lumen definition and eliminates reverberation artifact.



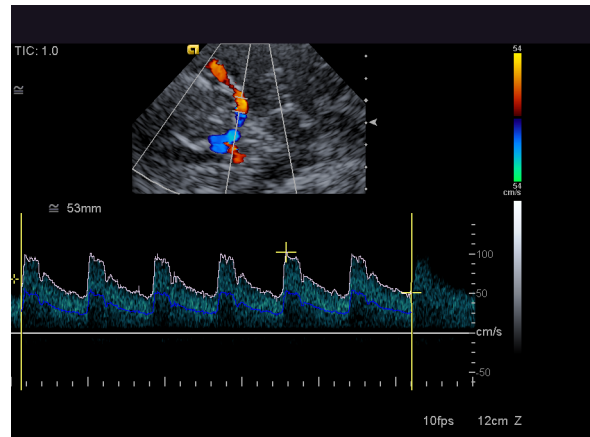
Advanced SieClear™ spatial compounding and Dynamic TCE™ technology

- Tissue borders and contrast are enhanced as seen in the spontaneous flow and venous valves in calf veins.



syngo Arterial Health Package

- Carotid intima-media wall thickness using syngo AHP to quickly evaluate cardiovascular risk.



Transcranial Doppler

- Color and pulsed wave Doppler sensitivity shown in middle cerebral artery.

Standalone clinical images may have been cropped to better visualize pathology.

ACUSON, Clarify, eSieScan, S2000, SieClear, SieScape, TCE and TEQ are trademarks of Siemens Medical Solutions USA, Inc. and syngo is a trademark of Siemens AG.

©06.2009. Siemens Medical Solutions USA, Inc.
Order No. A91US-122-1C-4A00
Printed in the USA
WS 0609 15.0

Local Contact Information

Siemens Medical Solutions USA, Inc.
51 Valley Stream Parkway
Malvern, PA 19355-1406 USA
Telephone: +1-888-826-9702
www.usa.siemens.com/healthcare

Europe: +49 9131 84-0
Asia Pacific: +65 6490 6000

Global Business Unit Address/ Legal Manufacturer

Siemens Medical Solutions USA, Inc.
Ultrasound
22010 S.E. 51st Street
Issaquah, WA 98029, USA
Phone: 1-888-826-9702
siemens-healthineers.com/ultrasound