

Abdominal Imaging



The ACUSON S2000™ ultrasound system is a flexible yet comprehensive system meeting today's most challenging imaging needs. The first system to offer 3D Dynamic TCE tissue contrast enhancement and provide real-time 3D speckle reduction for enhanced anatomic borders and contrast resolution, the ACUSON S2000 system delivers unprecedented image quality for virtually any patient.

Highlights

Volume imaging:

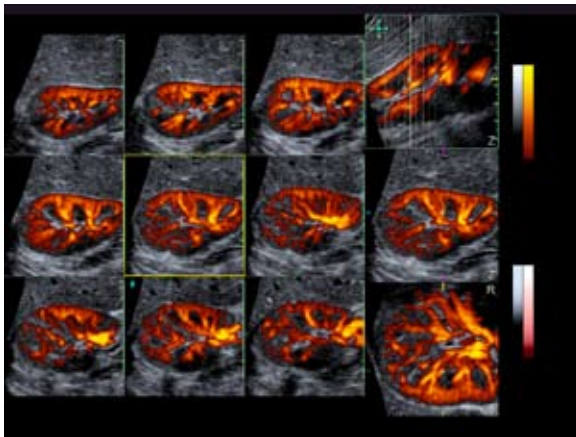
- **Advanced *fourSight*™ technology**
Offers comprehensive 3D/4D acquisition, data rendering and post-processing functionality on all examinations in 2D and color Doppler.
- **3-Scape™ real-time 3D imaging**
Enables real-time capture and display of grayscale and power Doppler volumes using both high resolution 2D and *fourSight*™ 4D transducer technology. Offers industry leading 3D/4D acquisition and multi-planar visualization.

Other key highlights:

- **Advanced *Sieclear*™ spatial compounding technology with *Dynamic TCE*™ tissue contrast enhancement technology**
Applies industry-leading, up to 13 lines of sight to improve contrast resolution and border detection. This real-time compounding technique includes the industry's first 3D Dynamic TCE algorithm to achieve speckle reduction and improved definition of anatomical structures.
- ***Cadence*™ contrast pulse sequencing (CPS) technology***
Enhances sensitivity and specificity to contrast-agent signals for excellent lesion detection and characterization.
- ***syngo*® *eSieCalcs*™ native tracing software**
Proprietary border detection technology facilitates lesion or anatomical structure boundary segmentation. Single button activation delivers unprecedented speed and reproducibility. Automatically calculates a 2D or 3D volume measurement anywhere manual tracing is utilized.
- ***Contrast Dynamics*™ software****
A quantification application used with *Cadence*™ contrast agent imaging technology. *Contrast Dynamics* software technology illustrates contrast agent enhancement by displaying graphs indicating changes of intensity over time within defined regions of interest (ROIs).

ACUSON S2000 ultrasound system

Advanced technologies and superior imaging for all patients



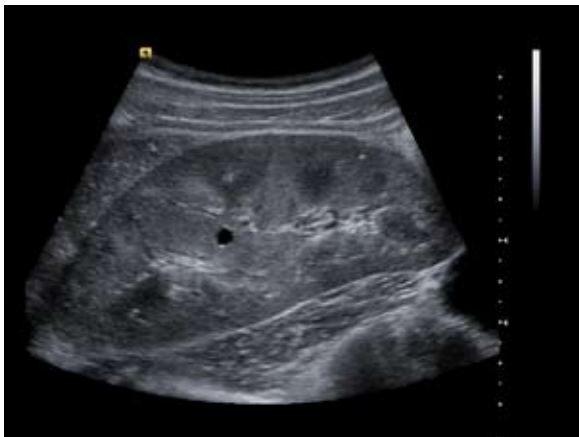
3-Scape real-time 3D imaging

- The excellent spatial resolution of Power Doppler is shown in this image of renal vasculature in a MultiSlice display.



syngo eSieCalcs software

- A sophisticated border detection algorithm operates within a user-defined region of interest to automatically define anatomical or pathological structures in 2D or 3D including this hyperechoic liver lesion.



Advanced SieClear spatial compounding and Dynamic TCE technology

- Tissue borders and contrast are enhanced to enable very high image quality for evaluation of fine renal anatomy.



Clarify™ vascular enhancement technology

- Exclusive algorithm enhances vascular lumen definition, eliminates reverberation artifact and reduces slice thickness partial volume effects.

Standalone clinical images may have been cropped to better visualize pathology.

*At the time of publication, the U.S. Food and Drug Administration has cleared ultrasound contrast agents only for use in LVO. Please check current regulations for the country in which you are using this system for contrast agent clearance.

3-Scape, ACUSON, Cadence, Clarify, Contrast Dynamics, *fourSight*, eSieCalcs, Native, SieClear, S2000 and TCE are trademarks of Siemens Medical Solutions USA, Inc. and *syngo* is a trademark of Siemens AG.

**Not commercially available in the United States.

© 12.2008. Siemens Medical Solutions USA, inc.
Order No. A91US-82-1C-4A00
Printed in the USA
WS 1208 10.0

Local Contact Information

Siemens Medical Solutions USA, Inc.
51 Valley Stream Parkway
Malvern, PA 19355-1406 USA
Telephone: +1-888-826-9702
www.usa.siemens.com/healthcare

Europe: +49 9131 84-0
Asia Pacific: +65 6490 6000

Global Business Unit Address/ Legal Manufacturer

Siemens Medical Solutions USA, Inc.
Ultrasound
22010 S.E. 51st Street
Issaquah, WA 98029, USA
Phone: 1-888-826-9702
siemens-healthineers.com/ultrasound