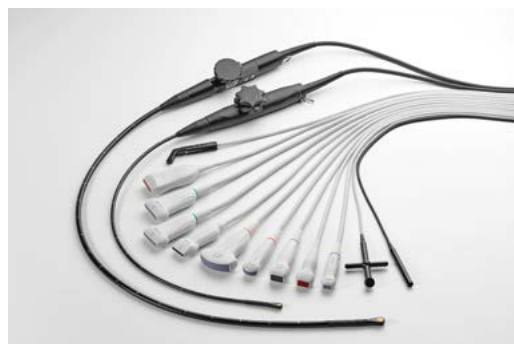


ACUSON Bonsai

Access cardiac status in the OR and Surgical suite

With the number and complexity of cardiovascular cases today, the need for portable, high-quality fast cardiac imaging is ever growing in the OR and surgical suite. Whether it's assisting with vascular access or accessing cardiac status, the ACUSON Bonsai™ ultrasound system provides high-quality images and robust applications all in one complete package wherever and whenever you need it.



The ACUSON Bonsai system has a variety of transthoracic echo (TTE) and transesophageal echo (TEE) transducers for your Adult, Pediatric, and Fetal needs.



The essence of power and portability

Assess cardiac status in the OR and Surgical Suite

Portable workflow

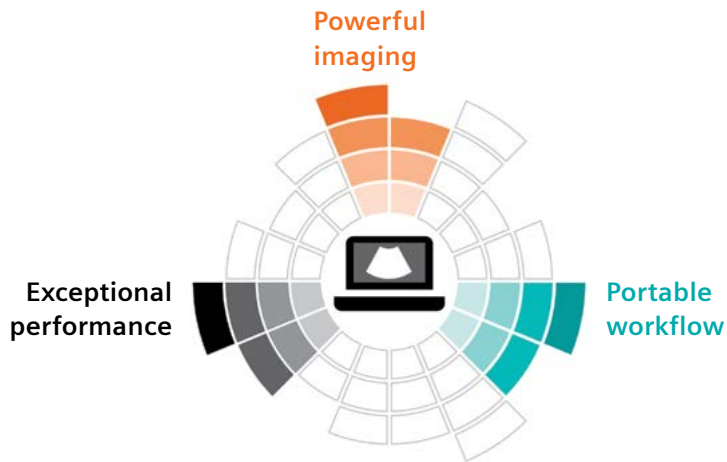
to improve your efficiency whenever and wherever you need it.

Powerful imaging

to improve your clinical confidence.

Exceptional performance

to help you instantly assess a variety of patient conditions.



Portable Workflow

Ultra Portable Design

Lightweight system at 12.8 lbs with a 7 second boot up from standby.

Meaningful Ergonomics

Noiseless system (39dB) with a control panel with a home-base design with 8 user-defined keys and 10-inch adjustable height cart.

Long-Lasting Battery

Lithium-ion battery that has 3.5 hours of working battery.

Durability

Whole-body magnesium-alloy shell with a spill resistant user interface.

Raw Data Advanced Post Processing

Improve clinical workflow and patient throughput with Raw Data advanced post processing.

Automated Protocols with iWorks with Insert™

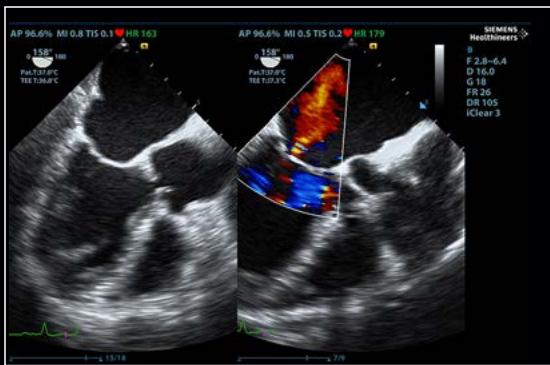
Facilitate exams with up to 43% reduced exam time and up to 75% fewer keystrokes.

Customized Measurements & Reports

Create your own output options, measurements, and reports with 8 completely customizable keys.



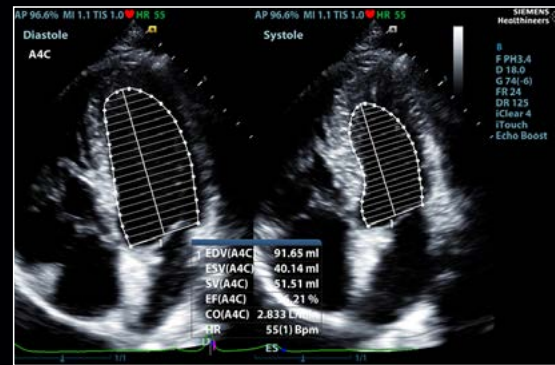
Powerful Imaging



Mitral Regurgitation assessment on the P7-3Ts TEE transducer

Use the P7-3Ts Adult TEE to assess MR severity before, during, or after surgery.

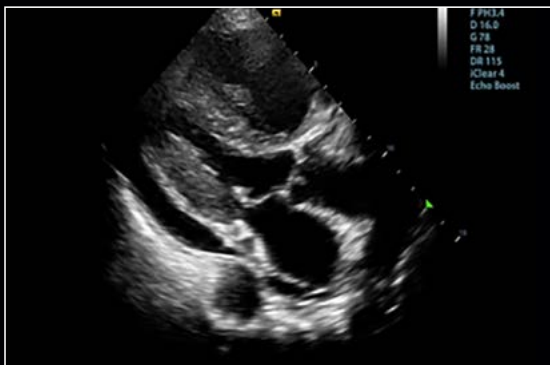
Exceptional Performance



AutoEF

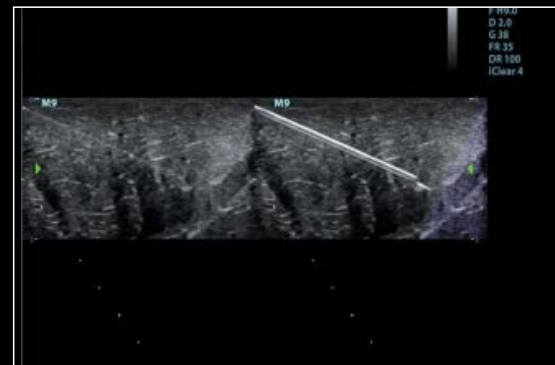
(Automatic Ejection Fraction measurement)

Apical four chamber view using the single crystal SP5-1s transducer with results from one-click AutoEF.



iBeam™ (Spatial Compounding) & HDR Flow (High Dynamic Range Flow)

Color flow of the carotid artery with the appearance of plaque.



iNeedle on the L12-4s transducer

Image on the left with needle visualization "OFF" Image on the right with needle visualization "ON" using the L12-4s transducer.

At Siemens Healthineers, our purpose is to enable healthcare providers to increase value by empowering them on their journey toward expanding precision medicine, transforming care delivery, and improving patient experience, all enabled by digitalizing healthcare.

An estimated 5 million patients globally benefit every day from our innovative technologies and services in the areas of diagnostic and therapeutic imaging, laboratory diagnostics, and molecular medicine, as well as digital health and enterprise services.

We are a leading medical technology company with over 170 years of experience and 18,000 patents globally. With more than 48,000 dedicated colleagues in 75 countries, we will continue to innovate and shape the future of healthcare.

On account of certain regional limitations of sales rights and service availability, we cannot guarantee that all products included in this brochure are available through the Siemens Healthineers sales organization worldwide. Availability and packaging may vary by country and is subject to change without prior notice. Some/All of the features and products described herein may not be available in the United States.

The information in this document contains general technical descriptions of specifications and options as well as standard and optional features, which do not always have to be present in individual cases.

Siemens Healthineers reserves the right to modify the design, packaging, specifications, and options described herein without prior notice. For the most current information, please contact your local sales representative from Siemens Healthineers.

Note: Any technical data contained in this document may vary within defined tolerances. Original images always lose a certain amount of detail when reproduced.

Siemens Healthineers Headquarters

Siemens Healthcare GmbH
Henkestr. 127
91052 Erlangen, Germany
Phone: +49 9131 84-0
siemens-healthineers.com

USA

Siemens Medical Solutions USA, Inc.
Healthcare
40 Liberty Boulevard
Malvern, PA 19355-9998, USA
Phone: +1-888-826-9702
siemens-healthineers.us

Distributed by

Siemens Medical Solutions USA, Inc.
Ultrasound
22010 S.E. 51st Street
Issaquah, WA 98029, USA
Phone: +1-888-826-9702
siemens-healthineers.us/ultrasound
Manufactured by Shenzhen Mindray
BioMedical. P.R. China