



ACUSON Bonsai

Routine Cardiovascular Ultrasound Exams

For the hospital bedside

With the number and complexity of cardiovascular cases today, the need for a comprehensive, high-quality, mobile cardiovascular ultrasound system is ever growing. The ACUSON Bonsai™ ultrasound system provides everything you need all in one complete package for all your portable everyday cardiovascular exams.

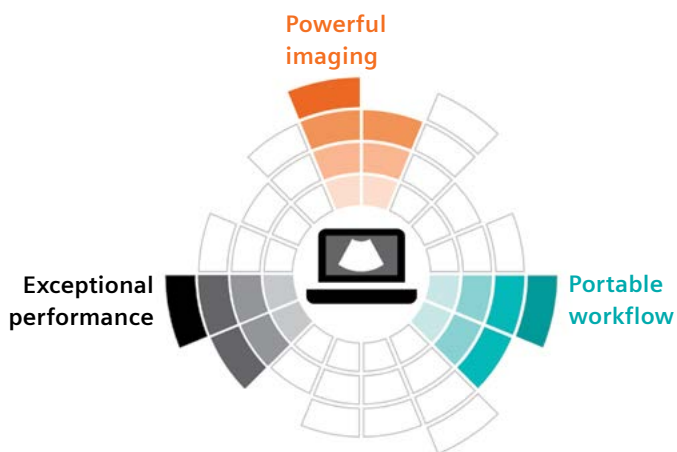


The ACUSON Bonsai system has 14 transthoracic echo (TTE) and transesophageal echo (TEE) transducers to handle your Adult, Pediatric, Fetal, and Vascular needs.



SIEMENS
Healthineers

Routine Cardiovascular Ultrasound Exams for the Hospital Bedside



Powerful imaging

with a full suite of one-touch image optimization features.

Exceptional performance

with Auto EF, Stress Echo, Strain, Auto IMT, and Anatomical M-Mode.

Portable workflow

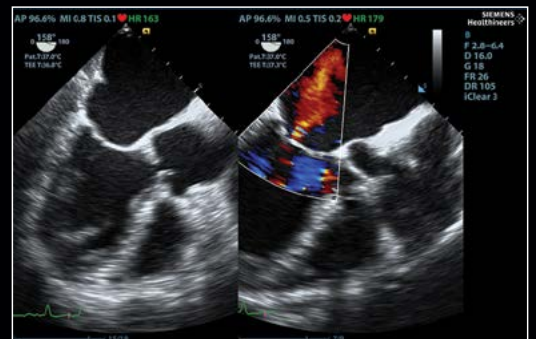
in a light, fast, and durable laptop with raw data, automated protocols, and customization.



Powerful Imaging

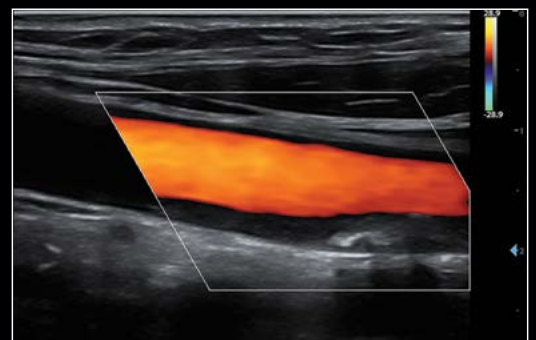


Echo Boost™ (Auto Image Optimization) & HDR Flow (High Dynamic Range Flow)
A4C view using the single crystal SP5-1s transducer with Echo Boost™, iClear™ (Speckle Suppression Imaging) and iTouch™ (Auto Gain Optimization). Echo boost improves the homogeneity of B-Mode and HDR Flow improves detection of high and low flow color.



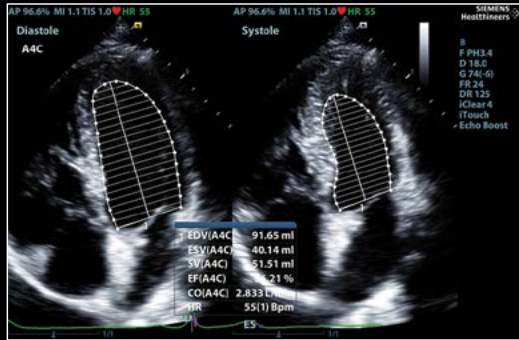
Mitral Regurgitation assessment on P7-3Ts TEE transducer

Use the P7-3Ts Adult TEE to assess MR severity.

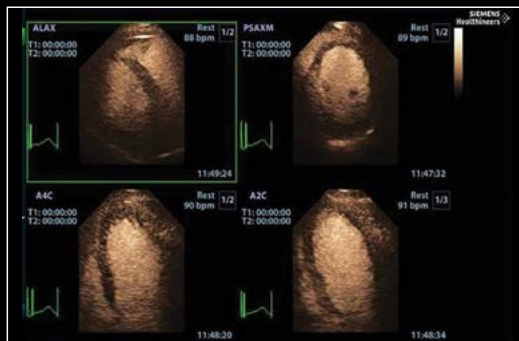


iBeam™ (Spatial Compounding) & HDR Flow (High Dynamic Range Flow)
Color flow of the carotid artery with the appearance of plaque.

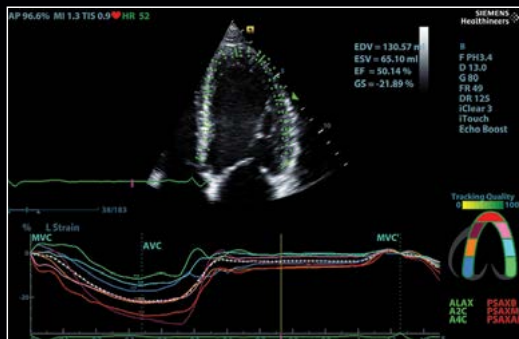
Exceptional Performance



AutoEF (Automatic Ejection Fraction measurement)
Apical four chamber view using the single crystal SP5-1s transducer with results from one-click AutoEF.



Stress Echo with LVO (Left Ventricular Opacification)
Left ventricle using the SP5-1s transducer during a stress echo exam using LVO Contrast Imaging (UWN: Ultra-Wideband Non-linear) + Contrast Imaging™).



Strain/Strain Rate (Tissue Tracking Quantitative Analysis)
Apical four chamber view quantifying left ventricular longitudinal strain with Tissue Tracking Quantitative Analysis.

Portable Workflow

Ultra Portable Design
Lightweight system at 12.8 lbs with a 7 second boot up from standby.

Meaningful Ergonomics
Noiseless system (39dB) with a control panel with a home-base design with 8 user-defined keys and 10-inch adjustable height cart.

Long-Lasting Battery
Lithium-ion battery that has 3.5 hours of working battery.

Durability
Whole-body magnesium-alloy shell with a spill resistant user interface.

Raw Data Advanced Post Processing
Improve clinical workflow and patient throughput with Raw Data advanced post processing.

Automated Protocols with iWorks with Insert™
Facilitate exams with up to 43% reduced exam time and up to 75% fewer keystrokes.

Customized Measurements & Reports
Create your own output options, measurements and reports with 8 completely customizable keys.



At Siemens Healthineers, our purpose is to enable healthcare providers to increase value by empowering them on their journey toward expanding precision medicine, transforming care delivery, and improving patient experience, all enabled by digitalizing healthcare.

An estimated 5 million patients globally benefit every day from our innovative technologies and services in the areas of diagnostic and therapeutic imaging, laboratory diagnostics, and molecular medicine, as well as digital health and enterprise services.

We're a leading medical technology company with over 120 years of experience and 18,500 patents globally. With about 50,000 dedicated colleagues in over 70 countries, we'll continue to innovate and shape the future of healthcare.

The outcomes and statements provided by customers of Siemens Healthineers are unique to each customer's setting. Since there is no "typical" hospital and many variables exist (e.g., hospital size, case mix, and level of service/technology adoption), there can be no guarantee that others will achieve the same results.

On account of certain regional limitations of sales rights and service availability, we cannot guarantee that all products included in this brochure are available through the Siemens Healthineers sales organization worldwide. Availability and packaging may vary by country and is subject to change without prior notice. Some/All of the features and products described herein may not be available in the United States.

The information in this document contains general technical descriptions of specifications and options as well as standard and optional features, which do not always have to be present in individual cases.

Siemens Healthineers reserves the right to modify the design, packaging, specifications, and options described herein without prior notice. For the most current information, please contact your local sales representative from Siemens Healthineers.

Note: Any technical data contained in this document may vary within defined tolerances. Original images always lose a certain amount of detail when reproduced.

Siemens Healthineers Headquarters

Siemens Healthcare GmbH
Henkestr. 127
91052 Erlangen, Germany
Phone: +49 9131 84-0
siemens-healthineers.com

USA

Siemens Medical Solutions USA, Inc.
Healthcare
40 Liberty Boulevard
Malvern, PA 19355-9998, USA
Phone: +1-888-826-9702
siemens-healthineers.us

Distributed by

Siemens Medical Solutions USA, Inc.
Ultrasound
22010 S.E. 51st Street
Issaquah, WA 98029, USA
Phone: +1-888-826-9702
siemens-healthineers.us/ultrasound
Manufactured by Shenzhen Mindray
BioMedical, P.R. China