



ACUSON Bonsai

Pediatric Echo

The essence of power and portability

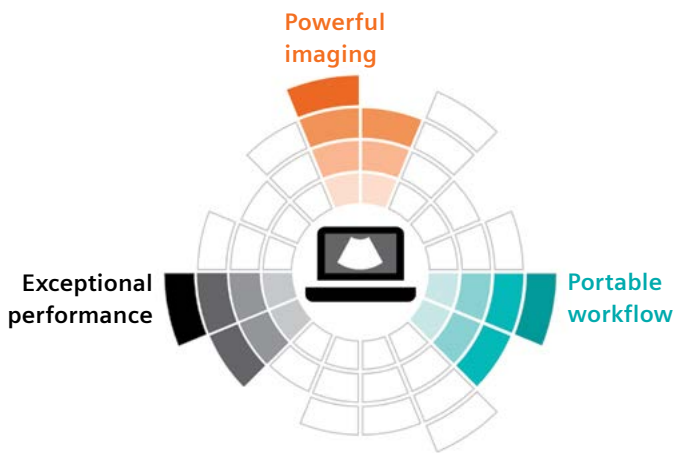
During a pediatric echo, you want to complete fast efficient exams where the child is comfortable whether that be at the bedside, an office, or a lab. The ACUSON Bonsai™ ultrasound system provides everything you need all in one complete package for all your portable everyday pediatric exams.



The ACUSON Bonsai system has a variety of transthoracic echo (TTE) and transesophageal echo (TEE) transducers for your pediatric needs.

Pediatric Echo

The essence of power and portability



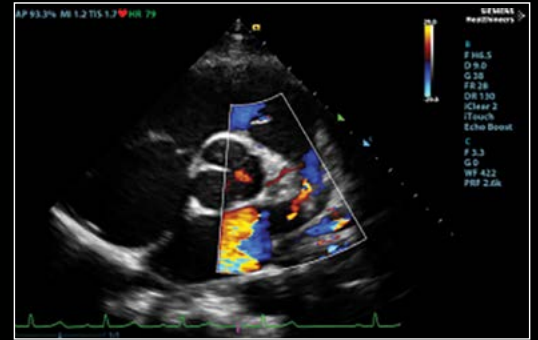
Powerful imaging
with a full suite of one-touch image optimization features.

Exceptional performance
with Auto EF, Stress Echo, Strain, Auto IMT, and Anatomical M-Mode.

Portable workflow
in a light, fast, and durable laptop with raw data, automated protocols, and customization.



Powerful Imaging



Echo Boost™
(Auto Image Optimization) & HDR Flow
(High Dynamic Range Flow)
PSAX view at the Aortic Valve level using the single crystal SP5-1s transducer with Echo Boost™, iClear™ (Speckle Suppression Imaging) and iTouch™ (Auto Gain Optimization). Echo boost improves the homogeneity of B-Mode and HDR Flow improves detection of high and low flow color.



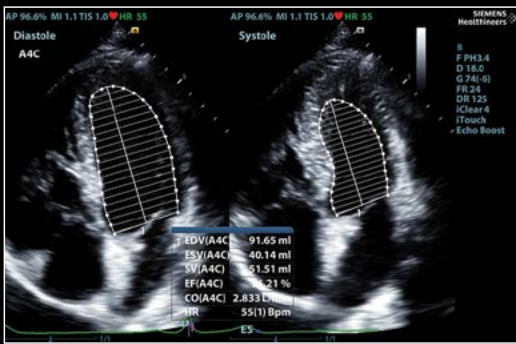
Assessment on the P8-3Ts TEE transducer
Use the P8-3Ts Pediatric TEE to assess.

Exceptional Performance



Z-Scores

Improve your workflow and decision-making with Z-Scores for your pediatric assessments.



AutoEF

(Automatic Ejection Fraction measurement)

Apical four chamber view using the single crystal SP5-1s transducer with results from one-click AutoEF.



Strain/Strain Rate

(Tissue Tracking Quantitative Analysis)

Apical four chamber view quantifying left ventricular longitudinal strain with Tissue Tracking Quantitative Analysis.

Portable Workflow

Ultra Portable Design

Lightweight system at 12.8 lbs with a 7 second boot up from standby.

Meaningful Ergonomics

Noiseless system (39dB) with a control panel with a home-base design with 8 user-defined keys and 10-inch adjustable height cart.

Long-Lasting Battery

Lithium-ion battery that has 3.5 hours of working battery.

Durability

Whole-body magnesium-alloy shell with a spill resistant user interface.

Raw Data Advanced

Post Processing

Improve clinical workflow and patient throughput with Raw Data advanced post processing.

Automated Protocols

with iWorks with Insert™

Facilitate exams with up to 43% reduced exam time and up to 75% fewer keystrokes.

Customized Measurements & Reports

Create your own output options, measurements and reports with 8 completely customizable keys.



At Siemens Healthineers, our purpose is to enable healthcare providers to increase value by empowering them on their journey toward expanding precision medicine, transforming care delivery, and improving patient experience, all enabled by digitalizing healthcare.

An estimated 5 million patients globally benefit every day from our innovative technologies and services in the areas of diagnostic and therapeutic imaging, laboratory diagnostics, and molecular medicine, as well as digital health and enterprise services.

We're a leading medical technology company with over 120 years of experience and 18,500 patents globally. With about 50,000 dedicated colleagues in over 70 countries, we'll continue to innovate and shape the future of healthcare.

The outcomes and statements provided by customers of Siemens Healthineers are unique to each customer's setting. Since there is no "typical" hospital and many variables exist (e.g., hospital size, case mix, and level of service/technology adoption), there can be no guarantee that others will achieve the same results.

On account of certain regional limitations of sales rights and service availability, we cannot guarantee that all products included in this brochure are available through the Siemens Healthineers sales organization worldwide. Availability and packaging may vary by country and is subject to change without prior notice. Some/All of the features and products described herein may not be available in the United States.

The information in this document contains general technical descriptions of specifications and options as well as standard and optional features, which do not always have to be present in individual cases.

Siemens Healthineers reserves the right to modify the design, packaging, specifications, and options described herein without prior notice. For the most current information, please contact your local sales representative from Siemens Healthineers.

Note: Any technical data contained in this document may vary within defined tolerances. Original images always lose a certain amount of detail when reproduced.

Siemens Healthineers Headquarters

Siemens Healthcare GmbH
Henkestr. 127
91052 Erlangen, Germany
Phone: +49 9131 84-0
siemens-healthineers.com

USA

Siemens Medical Solutions USA, Inc.
Healthcare
40 Liberty Boulevard
Malvern, PA 19355-9998, USA
Phone: +1-888-826-9702
siemens-healthineers.us

Distributed by

Siemens Medical Solutions USA, Inc.
Ultrasound
22010 S.E. 51st Street
Issaquah, WA 98029, USA
Phone: +1-888-826-9702
siemens-healthineers.us/ultrasound
Manufactured by Shenzen Mindray
BioMedical, P.R. China