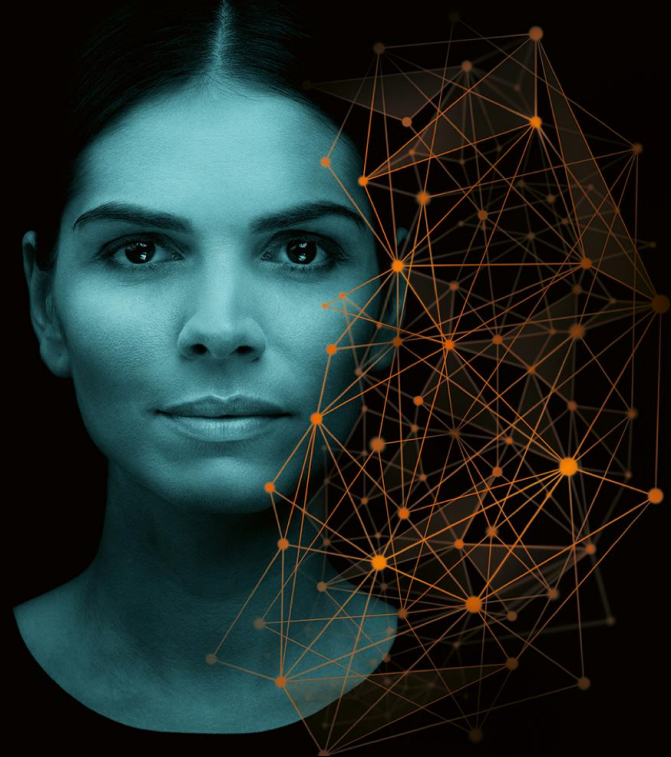
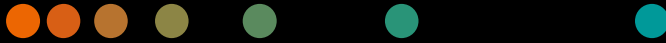


UpSkill Services

# abcdeSIM – simulated training for emergency medicine

Practical emergency education  
and assessment on demand



For most healthcare providers around the globe, attracting and retaining skilled staff is a critical success factor. 63% of healthcare CEOs see availability of key skills as a key concern.<sup>1)</sup>

One reason is to reduce the number of avoidable errors and costs. Medical errors in an emergency room, for example, usually occur due to incorrect information processing, verification or gathering.<sup>2)</sup> One emergency room malpractice claim alone can cost up to \$188,000.<sup>3)</sup> Ineffective training, however, can turn into a total loss of \$13.5 million per 1,000 employees.<sup>4)</sup>

[siemens-healthineers.com/services/customer-services/partner-up-for-workforce-education-and-efficiency](https://www.siemens-healthineers.com/services/customer-services/partner-up-for-workforce-education-and-efficiency)

abcdeSIM is a serious gaming simulation designed to train both doctors and nurses to react quickly and correctly in different emergency situations – for example, to resuscitate and stabilize a patient in ordered priority. abcdeSIM helps you to:

- **Optimize clinical operations and minimize medical errors** with virtual and interactive emergency training
- **Increase learning efficiency while enhancing staff satisfaction** with fast and easily accessible education anytime, anywhere
- **Improve learning experience in a cost-efficient manner** using gaming and simulation technology with a virtual patient model



1) *Fit for the future 17th Annual Global CEO Survey*, PWC 2014; 2) Schnapp BH et al. *Cognitive error in an academic emergency department*. *Diagnosis* 2018; 5(3):135-142 [pubmed.ncbi.nlm.nih.gov/30016277/](https://pubmed.ncbi.nlm.nih.gov/30016277/);  
3) Bianchin C, et al. *Medical malpractice claim risk in emergency departments*. *Emergency Care Journal* 2018; Vol 14:6366  
[www.researchgate.net/publication/326365122\\_Medical\\_malpractice\\_claim\\_risk\\_in\\_emergency\\_departments](https://www.researchgate.net/publication/326365122_Medical_malpractice_claim_risk_in_emergency_departments);  
4) [www.shiftelearning.com/blog/statistics-on-corporate-training-and-what-they-mean-for-your-companys-future](https://www.shiftelearning.com/blog/statistics-on-corporate-training-and-what-they-mean-for-your-companys-future)

# abcdeSIM enables your staff to practice in a simulated and safe environment for improved learning experience.

## What does ABCDE stand for?

ABCDE is a standard protocol used worldwide to "Treat first, what kills first." The letters stand for:

**A**irway

**B**reathing

**C**irculation

**D**isability

**E**xposure

## Apply theoretical knowledge into practice with a blended learning approach using abcdeSIM for different training scenarios.



E-learning in abcdeSIM



Classroom Education with abcdeSIM case scenarios

First, users have to acquire theoretical knowledge. In the e-learning part of abcdeSIM, all components are explained step by step. Each learning section has questions that users have to answer in order to move on to the next.

### Theoretical knowledge



Self-study and practice with abcdeSIM serious gaming simulation



Practice in Simulation Lab.<sup>1)</sup> with abcdeSIM



Actual patient care

### Blended Learning

### Practical skills

After passing the e-learning part, users will need to take a knowledge test in order to unlock and access the ABCDE simulation game. The game includes five scenarios where users can test their practical skills in a safe, virtual environment.

Each scenario can be played several times. To maintain their ABCDE skills, users can always practice multiple times in the virtual emergency room.

1) abcdeSIM may be used concomitantly in Simulation Laboratories. Siemens Healthineers is not the legal manufacturer of abcdeSIM. Any claims made for this product are under the sole responsibility of the legal manufacturer, VirtualMedSchool. Additionally, abcdeSIM may not be commercially available in all countries. Please contact the legal manufacturer for more information: <https://virtualmedschool.com/contact/>. The products/features and/or service offerings (here mentioned) are not commercially available in all countries and/or for all modalities. If the services are not marketed in countries due to regulatory or other reasons, the service offering cannot be guaranteed. Please contact your local Siemens Healthineers organization for further details. Not for clinical use. For training purposes only.

**Siemens Healthineers Headquarters**  
Siemens Healthcare GmbH  
Henkestr. 127  
91052 Erlangen,  
Germany  
Phone: +49 9131 84-0  
[siemens-healthineers.com](https://www.siemens-healthineers.com)