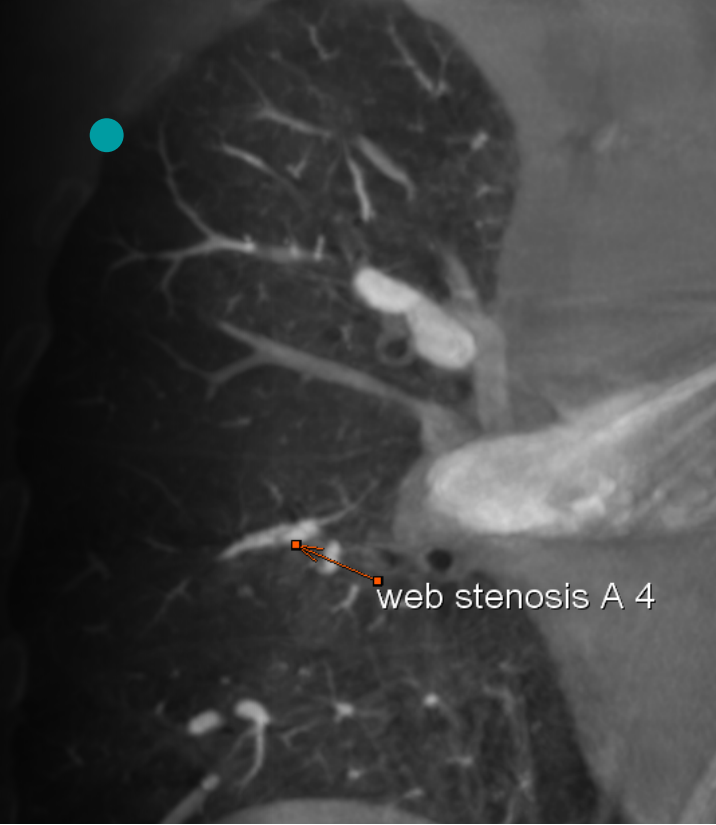


## Study Protocol

# Balloon angioplasty in CTEPH

Vascular Interventions



For *syngo* iFlow no separate DSA runs are necessary

---

### Courtesy of

PD Dr. Jan Hinrichs, MD  
Institute for Diagnostic and Interventional Radiology,  
Medical School Hannover,  
Germany

**Supported by**  
*syngo* iFlow

**System & Software**  
Artis pheno VE 10

---

## Case Description

### Patient history

74-year-old female patient with history of recurrent pulmonary embolism and chronic embolic pulmonary hypertension (CTEPH).

### Diagnosis

CTEPH with perfusion defects.

### Treatment

In the third balloon angioplasty procedure, we focused on the right middle and right upper lobe.

### General comments

With *syngo* iFlow we were able to visualize the improvement of peripheral filling of the treated vessels.

ROIs create contrast concentration versus time curves.

### Tips and tricks

For the use of *syngo* iFlow, 4 F/s DSA run is sufficient. No separate DSA runs are necessary.

Coordinate timing of injection for direct pre- and posttreatment comparison.

# Arthrography of lunatummalacia right wrist using *syngo* DynaCT Micro

Acquisition protocol	DSA 4 F/s ~27 frames
<b>Injection protocol</b>	
Catheter position	Upper right lung lobe artery
Contrast medium (CM)	300 mg iodine/mL
Dilution (CM/Saline):	60%
Injection volume	8 mL
Injection rate	Hand injection
Duration of injection	10 s
X-ray delay	Injection starts right after mask image
Power injector used	No

## Clinical Images

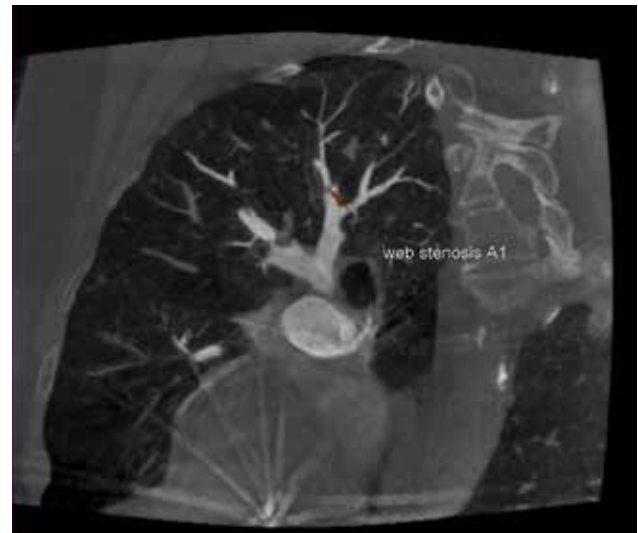
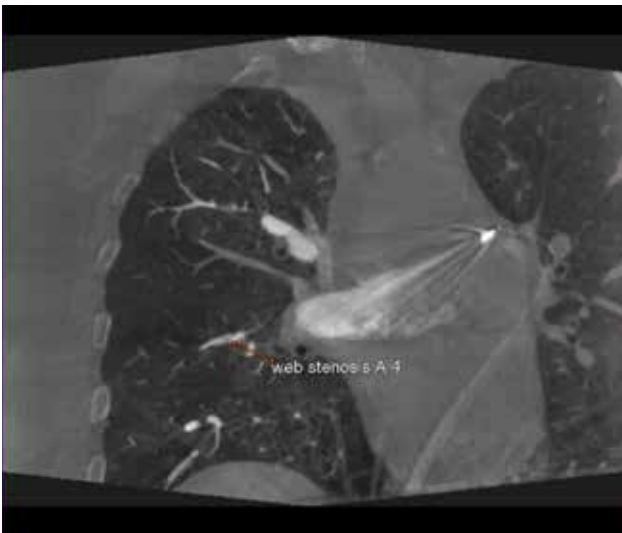


Figure 1: Web stenoses visible on *syngo* DynaCT images

## Clinical Images

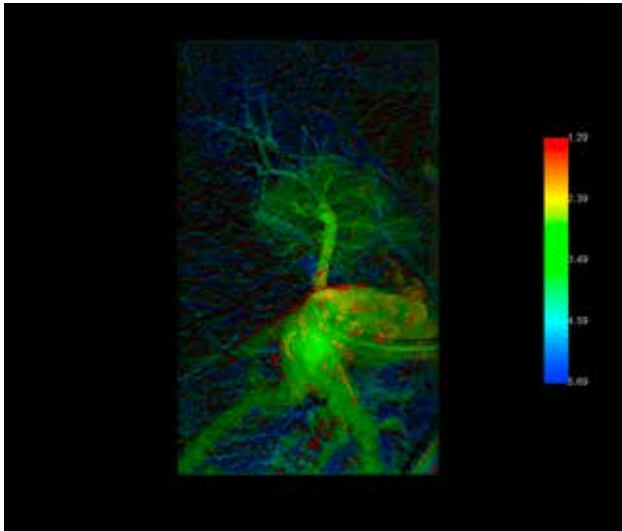


Figure 2: syngo iFlow before angioplasty

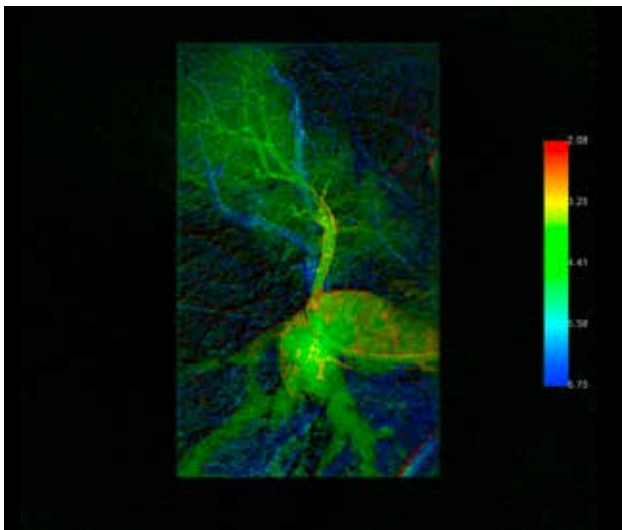
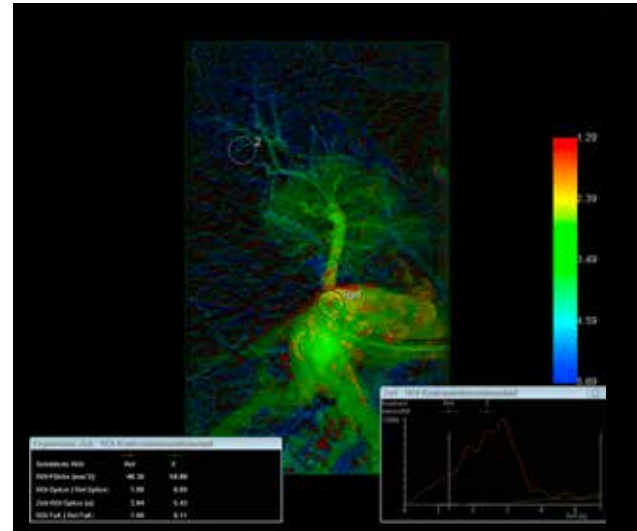
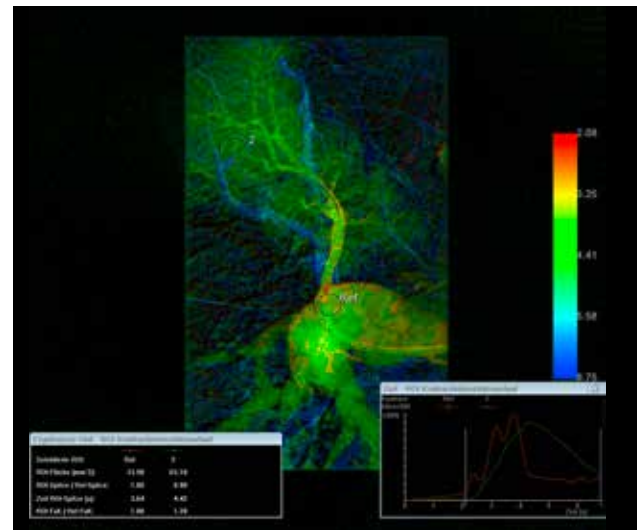


Figure 3: syngo iFlow after angioplasty visualizes the improvement of peripheral blood flow



**Siemens Healthineers Headquarters**  
 Siemens Healthcare GmbH  
 Henkestr. 127  
 91052 Erlangen, Germany  
 Phone: +49 9131 84-0  
 siemens-healthineers.com

*The statements by Siemens' customers presented here are based on results that were achieved in the customer's unique setting. Since there is no "typical" hospital and many variables exist (e.g., hospital size, case mix, level of IT adoption), there can be no guarantee that other customers will achieve the same results.*

*On account of certain regional limitations of sales rights and service availability, we cannot guarantee that all products included in this case are available throughout the Siemens sales organization worldwide.*

*All rights reserved.*