

Congenital scoliosis

Multitom Rax True2scale Body Scan^{1,2} clinical case
Artemed Hospital Munich, Germany



¹ Option

² True2scale Body Scan is pending 510(k) clearance, and is not yet commercially available in the United States.



Study ID 5aac261

Multitom Rax True2scale Body Scan^{1,2}

Clinical background and indication

Patient

Female | *2000 | Height 168 cm | BMI 19.5 kg/m²

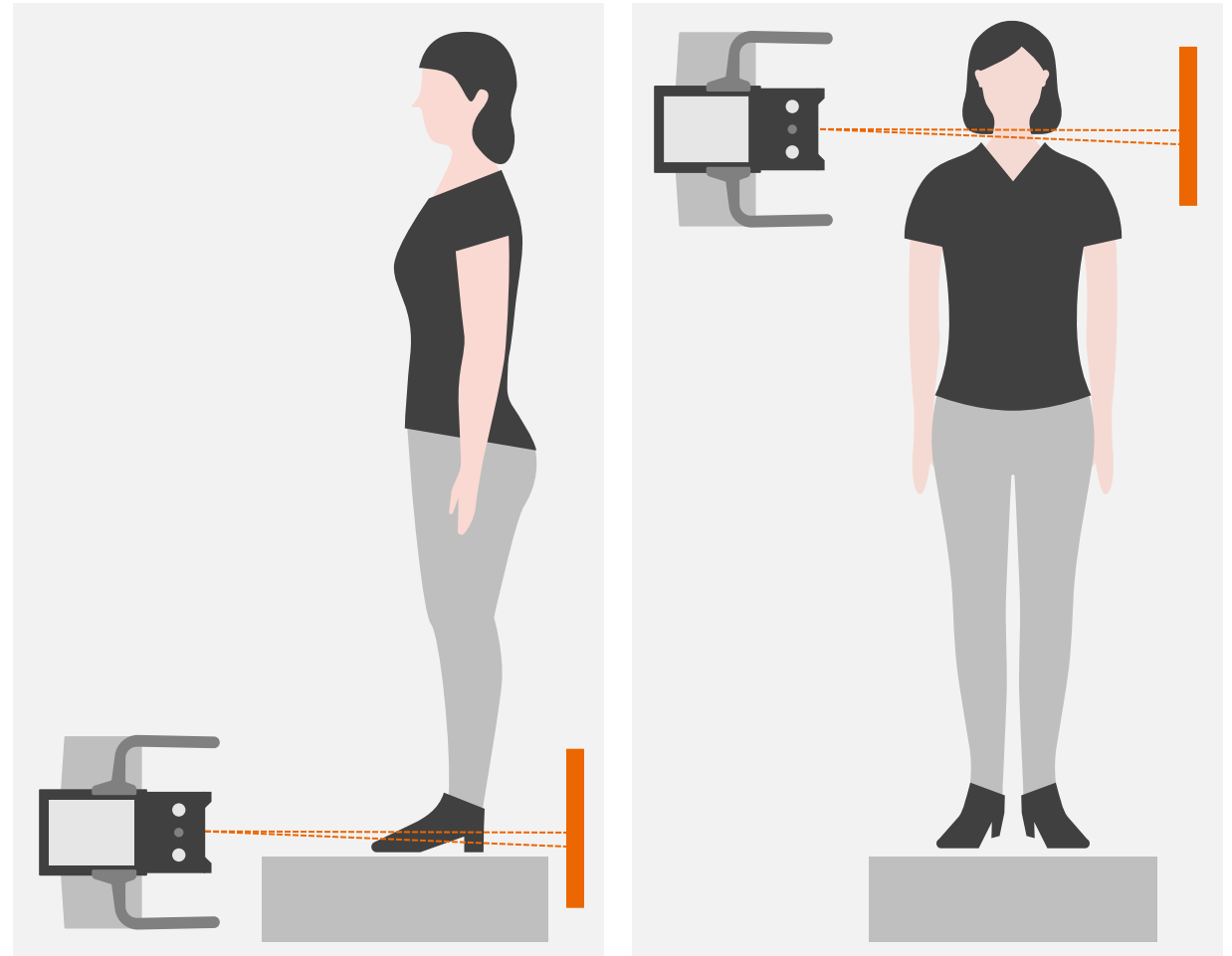
Anamnesis

Congenital scoliosis of the thoracic spine.

Indication for True2scale Body Scan^{1,2}

Analysis of the sagittal balance and measurement of the scoliosis as part of the preparation for the operation.

True2scale was chosen because it offers the possibility of a distortion-free examination of the entire spine upright in the natural weight-bearing state.



The products/features (mentioned herein) are not commercially available in all countries.

Their future availability cannot be guaranteed.

¹ Option

² True2scale Body Scan is pending 510(k) clearance and is not yet commercially available in the United States.

Multitom Rax

True2scale body scan^{1,2}

Settings



True2scale Body Scan in two planes using upright S protocol

Scan range 61 cm

Scan time 18 sec

Anterior posterior examination

Tube voltage 81 kV

Current time product 32.34 mAs

Dose area product 5.11 $\mu\text{Gy}\cdot\text{m}^2$

Lateral examination

Tube voltage 117 kV

Current time product 40.92 mAs

Dose area product 13.46 $\mu\text{Gy}\cdot\text{m}^2$

The products/features (mentioned herein) are not commercially available in all countries.

Their future availability cannot be guaranteed.

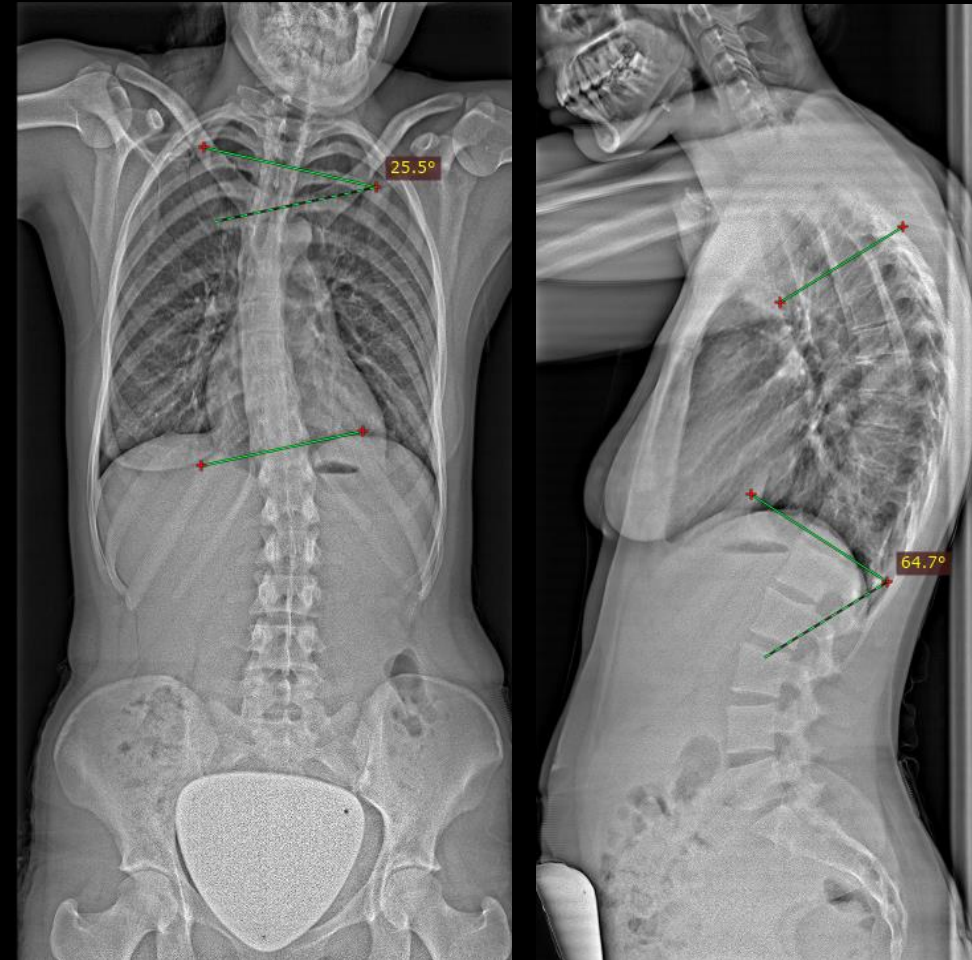
¹ Option

² True2scale Body Scan is pending 510(k) clearance and is not yet commercially available in the United States.

Multitom Rax True2scale Body Scan^{1,2}

Diagnostic findings

- No fractures. No structural disruption. No degenerative changes.
- Hyperkyphosis of the thoracic spine at 64° (normal range: 30° to 50°).
- Regular lordosis of the lumbar spine at 53° (normal range: 50° to 60°).
- Right convex scoliosis of the thoracic spine with a Cobb angle of 26°.
- Positive sagittal balance.



The products/features (mentioned herein) are not commercially available in all countries.

Their future availability cannot be guaranteed.

¹ Option

² True2scale Body Scan is pending 510(k) clearance, and is not yet commercially available in the United States.



“The overall image impression is good. Image contrast is excellent and there are no relevant image noise or artifacts.”¹

Amir Bigdeli, MD
Artemed Hospital Munich, Germany

¹The statements by Siemens Healthineers customers described herein are based on results that were achieved in the customer's unique setting. Since there is no “typical” hospital and many variables exist (e.g. hospital size, case mix, level of IT adoption) there can be no guarantee that other customers will achieve the same results.



The products/features (mentioned herein) are not commercially available in all countries. Their future availability cannot be guaranteed.

Some products/features (here mentioned) are not necessarily commercially available in all countries. Due to regulatory reasons their availability cannot be guaranteed.

Results from case studies are not predictive of results in other cases. Results in other cases may vary.

Dr. Amir Bigdeli is employed by an institution that receives financial support from Siemens Healthineers for collaborations.

Thank you for your interest!

Siemens Healthineers

Department

Siemens Healthcare GmbH

Musterstraße 234

56789 Musterort, Germany

Phone: +49 XXX XXX-X

siemens-healthineers.com

Max Mustermann

Phone: +49 XXX XXX-X

max.mustermann@siemens-healthineers.com