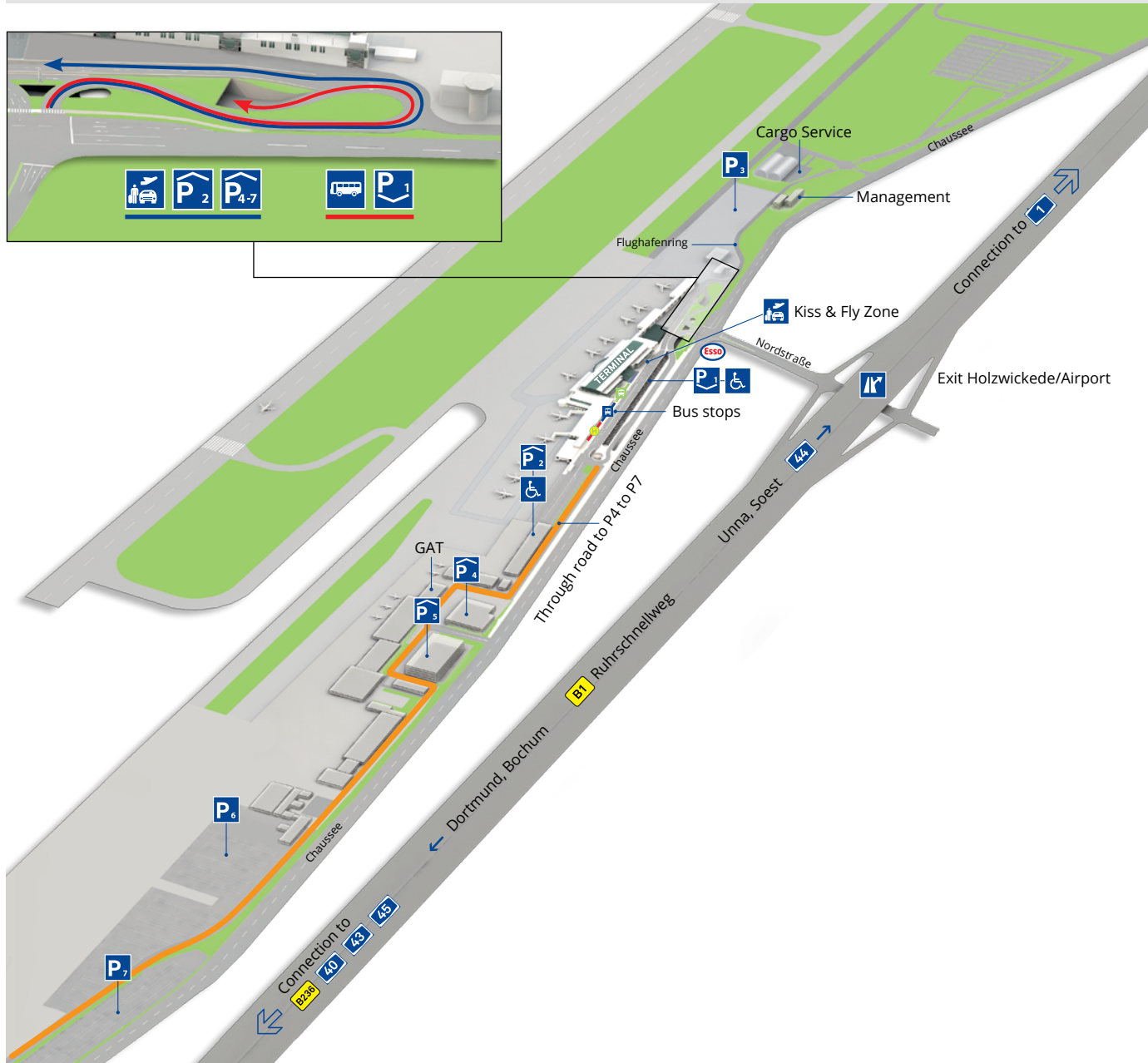


# Quite close.

The short route to the goal.  
Dortmund: The airport nearby.

# Dortmund Airport 21

## Parking lot overview



### Information for navigation systems

#### Terminal address

Flughafenring 2, 44319 Dortmund

#### POI

Flughafen Dortmund

#### GPS-coordinates

longitude N 51° 30' 53"

latitude E 7° 36' 47"



### Clearance height underground garage P1

The clearance height for the underground garage P1 is 2 metres.



### Kiss & Fly Zone

The Kiss & Fly Zone may only be used for free to load and unload – parking is subject to a charge.  
[www.dortmund-airport.com/drop-off-and-pick-up](http://www.dortmund-airport.com/drop-off-and-pick-up)



### Parking fees

The current parking fees are available at:  
[www.dortmund-airport.com/parking-at-dortmund-airport](http://www.dortmund-airport.com/parking-at-dortmund-airport)

## Arrival and departure



### By car

The Dortmund airport is located at the eastern edge of the Ruhr area, easily and quickly accessible from all directions via the Federal highways. Regarding traffic, it is situated conveniently on the A40 (B1) – a vehicle emission sticker is not required for arrival. Once arriving at the airport, there are roughly 5,000 parking places available to you. Information on the parking fees are available at [www.dortmund-airport.com/parking-at-dortmund-airport](http://www.dortmund-airport.com/parking-at-dortmund-airport)



### Car hire

The car hire desks are located at the arrivals level (level 0), the rentals are ready to be picked up in car park P1. The cars are also returned on level 0, the parking spaces are marked with the respective car rental company. Should the return of the car take place outside the business hours of the car rental company, the car keys and papers can be returned to the drop-box of the respective car rental company at the exit east (level 0) – in direct proximity to the taxi stand, outside the terminal.

#### Avis/Budget

Telephone +49.231.9 27 38 30

#### Europcar

Telephone +49.231.9 27 11 40

#### Sixt

Telephone +49.231.92 71 55 11



### By taxi

Taxis can drop arriving passengers right outside the terminal in the so-called Kiss & Fly Zone at the departures level (level 1). From there, it is only a short path to the check-in counters and the security checks. Departing passengers will find the taxi stand at the arrivals level (level 0) directly next to the east exit. Further information at [www.dortmund-airport.com/taxis-and-transfers](http://www.dortmund-airport.com/taxis-and-transfers)



### Tourist bus and deliveries

For tourist busses and deliveries, there is a parking area/loading and unloading zone on the arrivals level (level 0). To do so, please use the access road to garage P1 first, and keep to the right. Deliveries must be announce via the callbox for busses, please take a ticket to use the chargeable bus lane. You can find the current prices at [www.dortmund-airport.com/how-to-find-us/directions-and-deliveries](http://www.dortmund-airport.com/how-to-find-us/directions-and-deliveries) The clearance is 4 metres, the weight limitation max. 22 t.

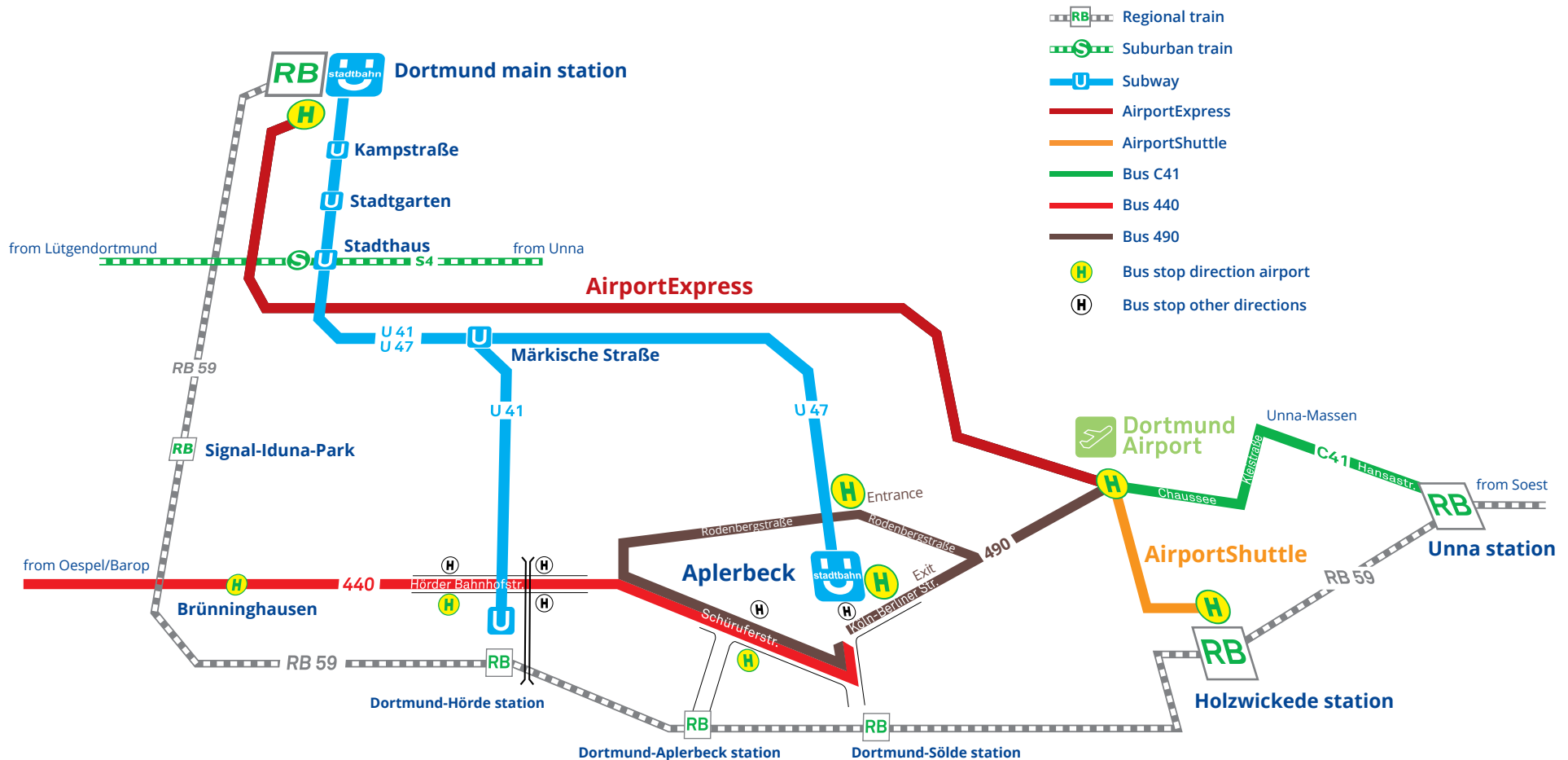
## Arrival and departure



### By bus & train

To arrive or depart using public transport, among other things, there is the AirportExpress, offering a direct connection from Dortmund Main Station, as well as the AirportShuttle with a direct connection to Holzwickede station. Both stations can be reached with local and regional transport of the Deutsche Bahn. You can start a timetable inquiry via the website of the Bahn railway service (incl. AirportExpress or AirportShuttle connections). The bus stops are located right outside

the Dortmund Airport terminal (departure level/level 1), only a few meters from the entrance. The current bus schedules are available on our website at [www.dortmund-airport.com/bus-and-train](http://www.dortmund-airport.com/bus-and-train). During international trade fairs and exhibitions, the AirportExpress takes a different route and additionally stops near the fair grounds Messe Westfalenhallen – the destinations may be reviewed on the respective timetables.



## Parking tips & company information



### Ticket machine

There are car park payment machines in the terminal (arrivals level/level 0), in car park P2 and at the stops for the car park shuttle bus. As you only have around 15 minutes to leave the car park after paying, we recommend using the payment machines in the car park where your car is parked. The following types of payment are accepted: Coins and notes, EC cards, credit cards (Visa, MasterCard, American Express). The car parks are open for 24 hours a day.



### Parking lot shuttle (Bus 490)

The bus line 490 connects the terminal to the parking lots and car parks 4/5 and 6 every day – use is subject to a charge. Tickets are available via an on-line booking, the ticket machines at the parking lots and at the terminal, at the information desk and a ticket machine outside the terminal. The VRR transport rates do not apply for rides between the car parks and parking spaces. You can find the current prices and timetables as well as further information at [www.dortmund-airport.com/parking-at-dortmund-airport](http://www.dortmund-airport.com/parking-at-dortmund-airport)



### Accessible parking spaces

Passengers with a disability are offered the chance to park for free in the designated spaces in the car parks (P1 and P2) of the Dortmund Airport. The precondition for this is a disabled person's pass with the indication 'aG' (severely walking impaired), 'Bl' (blind), 'H' (helpless) or 'B' (requires constant assistance). **Important:** The free exit ticket can only be handed out on the day of return at the ID/Parking Centre (Arrival/Level 0) or at the Information Desk (Departure/Level 1) – the flight ticket must also be presented there. Please understand that a later refund is not possible.



### Parking for women

Parking spaces for women are located in the underground garage P1 on all levels (level 0 to -2) in the direct vicinity to the terminal's entrances.



### Parking administration

The parking administration is located directly in the terminal on the arrivals level (level 0) and is occupied around the clock (Tel.: +49.231.9213-210). A direct voice chat connects to them from the ticket machines.

## Company information

Published by:

Flughafen Dortmund GmbH  
Flughafenring 11, 44319 Dortmund  
Telephone +49.231.9213-01  
Fax +49.231.9213-125  
[www.dortmund-airport.com/contact](http://www.dortmund-airport.com/contact)